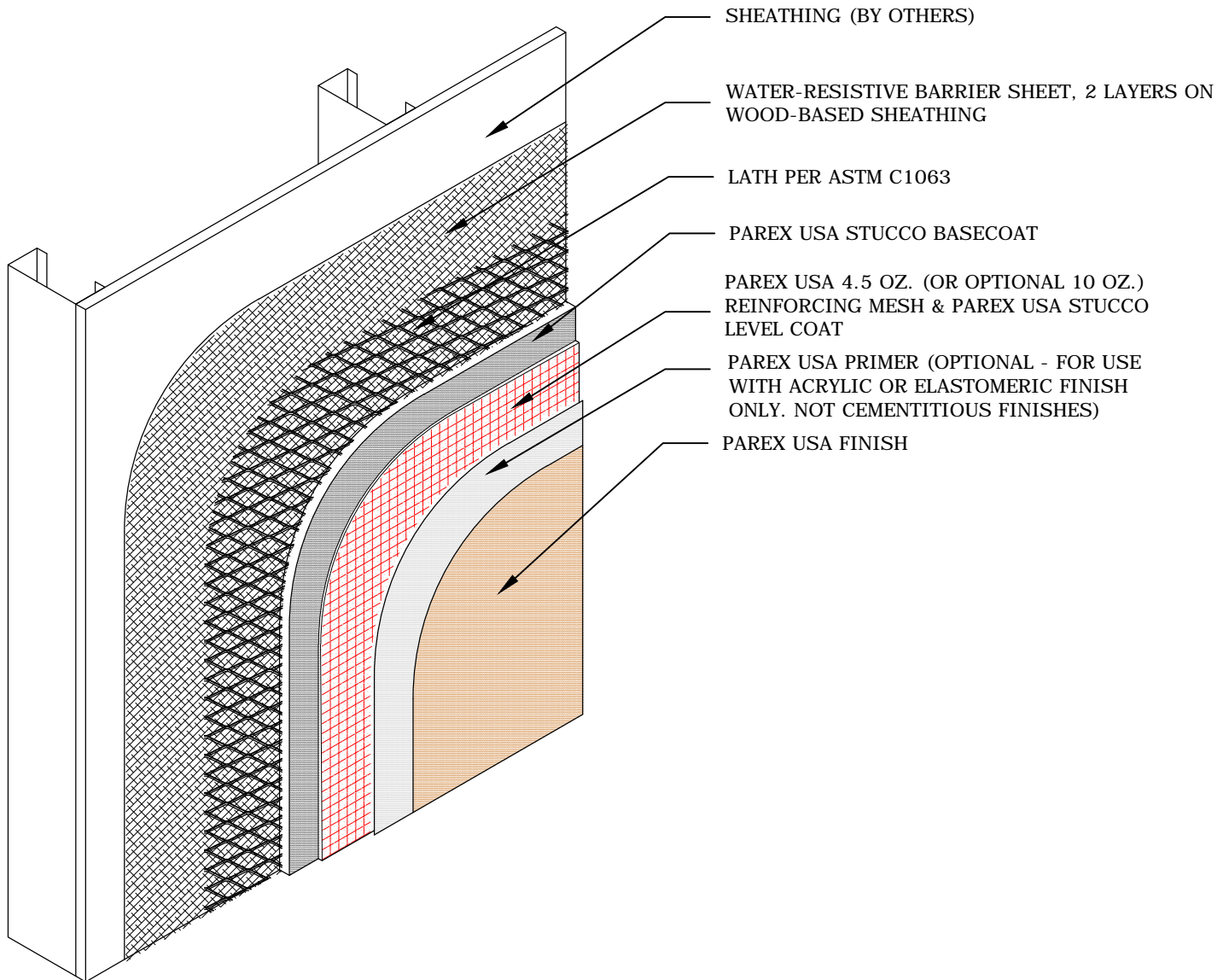


PAREX USA STUCCO ASSEMBLIES



G1.08 STUCCO ASSEMBLY / KRAK-SHIELD / STEEL FRAME

PAREX ARMOURWALL 100 & 300, LAHABRA FASTWALL 100 & 300, EL REY FASTWALL & FIBER-47, TEIFS ONE COAT & SCRATCH & BROWN

HE KRAK-SHIELD WATERMASTER

NOTE:

1. Stucco Claddings and any cladding using a mortar bed require the use of a slipsheet installed over the Water-Resistive & Air Barrier Coating to prevent adhesion of the stucco.
2. Refer to Parex USA specifications specified basecoat product & thickness

Disclaimer: The design specifications and construction shall comply with all local building codes and standards. Parex USA installation guidelines are for general information and guidance only and Parex USA specifically disclaims any liability for the use of this design, and for design engineering, or workmanship of any project. The assembly shall be designed to prevent condensation within the assembly. The designer and the user shall provide final drawings and specifications. Products shown other than those manufactured by Parex USA are shown for clarity of the Parex USA product only. Contact the Manufacturer for installation instructions. Technical Support: 1-800-226-2424 www.parexusa.com