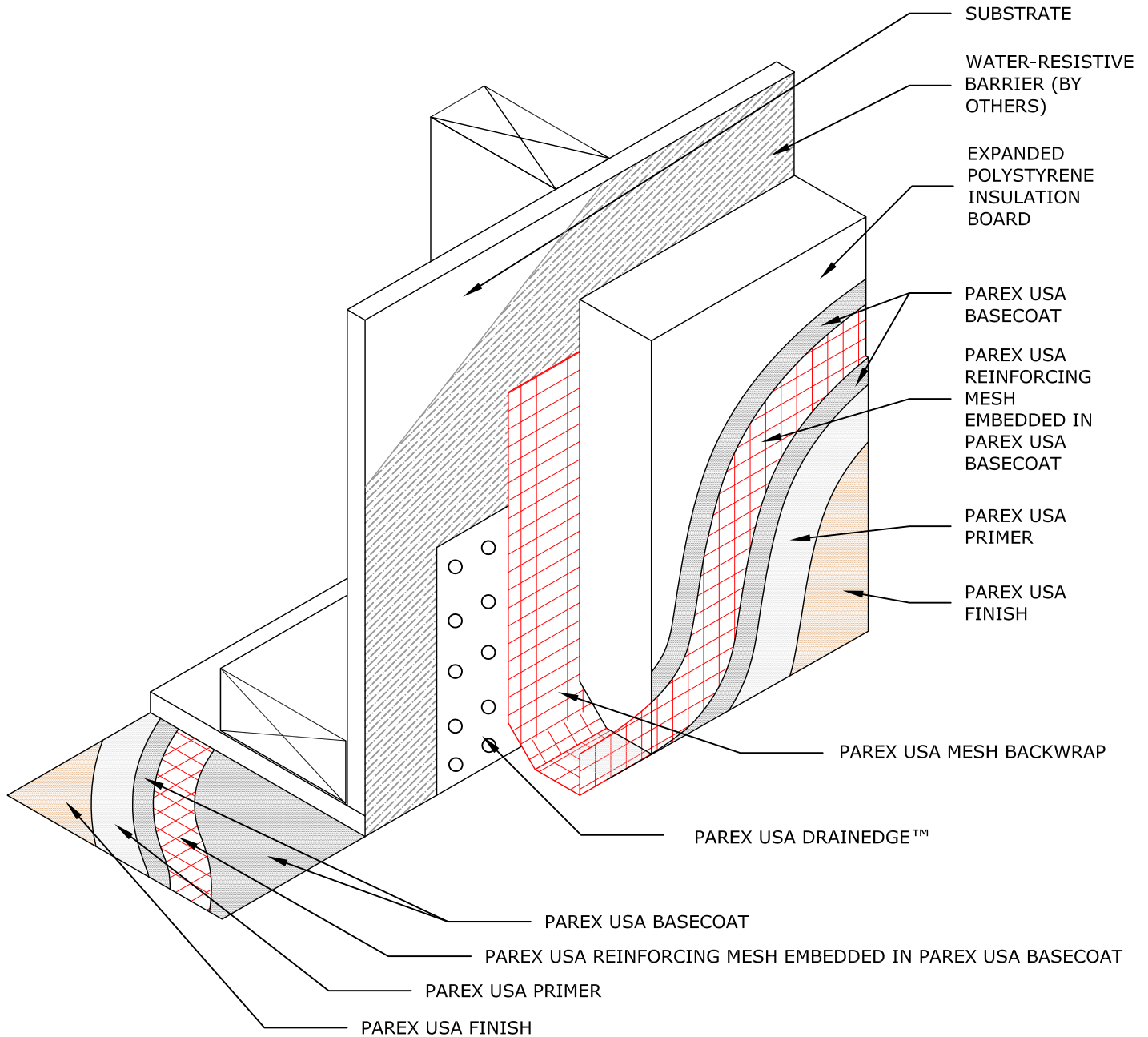


El Rey® INSUL-FLEX WATERMASTER LCR SYSTEM



IF LCR R1.02B SECTION AT FASCIA/SOFFIT WITHOUT INSULATION

INSUL-FLEX WATERMASTER LCR SYSTEM

- NOTES:
1. See G 1.01 A, B or C for Drainage Options.
 2. See G 1.02 for termination Options.
 3. Where the soffit is considered a weather exposed surface in accordance with the local building code, it may require a water resistive barrier above the glass mat faced sheathing.

Disclaimer: The design, specifications, and construction shall comply with all local building codes and standards. Parex USA installation guidelines are for general information and guidance only and Parex USA specifically disclaims any liability for the use of this design, and for design, engineering, or workmanship of any project. The assembly shall be designed to prevent condensation within the assembly. The designer and the user shall provide final drawings and specifications. Products shown other than those manufactured by Parex USA are shown for clarity of the Parex USA product only. Contact the manufacturer of such other products for installation instructions.