

Note: The design specifications and construction shall comply with all local building codes and standards. Parex USA installation guidelines are for general information and guidance only and Parex USA specifically disclaims any liability for the use of this design, and for design engineering, or workmanship of any project. The assembly shall be designed to prevent condensation within the assembly. The designer and the user shall provide final drawings and specifications. Products shown other than those manufactured by Parex USA are shown for clarity of the Parex USA product only. Contact the Manufacturer for installation instructions.

Note: To ensure a continuous air barrier across the building envelope, a continuous air seal should be made at each substrate change, joints/gaps, penetrations and dissimilar material terminations. There must be a consideration of the Designer in the overall wall assembly design. Stucco claddings and any cladding using a mortar bed require the use of a slipsheet installed over the Water-Resistive & Air Barrier Coating to prevent adhesion to the stucco.

The drawings, and any related notes, or text contained thereon are based upon typical requirements of Parex USA Stucco Assembly and are published strictly as a guide for architectural and construction industry professionals to illustrate typical or general design conditions.

These details are not to be used by themselves, and do not constitute design instructions for Parex USA Stucco Assembly application. These details must be used in conjunction with Parex USA current product specifications, product data sheets, and application instructions.

Any details shown are strictly for the purpose of illustrating typical Parex USA Stucco Assembly design applications. Any other materials shown in any details are incidental to the details, and are included only for clarity of the Parex USA Stucco Assembly detail. Please consult with the manufacturers and/or suppliers of any separate materials for their product specifications and applications instructions.

Where site or design conditions not shown in these details are present, or any unusual design is involved, please consult with Parex USA Technical Department for assistance.

PAREX USA DOES NOT WARRANT THE FITNESS OF SUITABILITY OF THESE DETAILS FOR CONSTRUCTION, OR ASSUME ANY LIABILITY FOR USE OF THESE DETAILS. IT IS THE SOLE RESPONSIBILITY OF ANY ARCHITECTURAL OR CONSTRUCTION INDUSTRY PROFESSIONAL TO APPLY THEIR PROFESSIONAL KNOWLEDGE IN UTILIZING THE INFORMATION CONTAINED IN THESE DETAILS.

SECTION 1

PAGE 3

Non Insulated General Details

SECTION 2

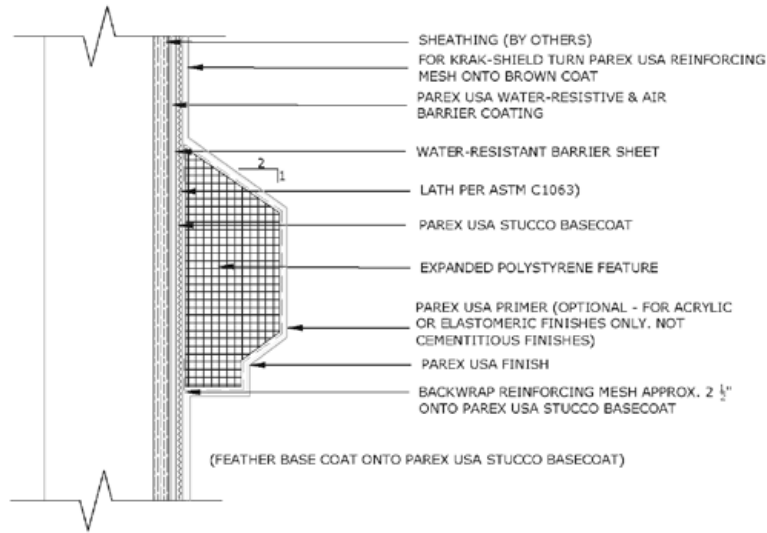
PAGE 24

Insulated (HE) General Details



SECTION 1 CONTENT NON INSULATED GENERAL DETAILS

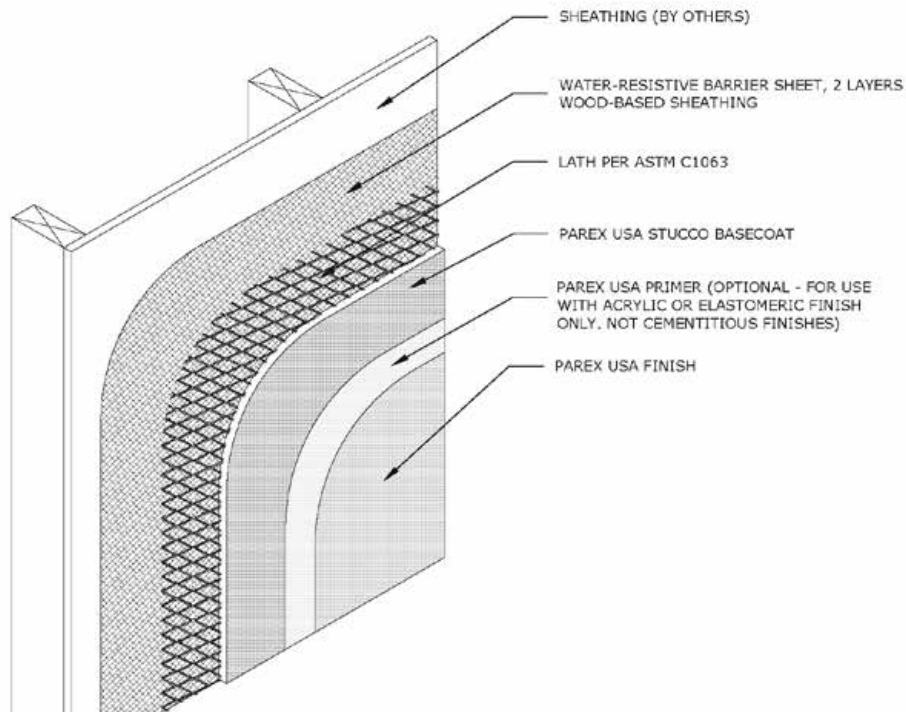
SUBJECT	DETAIL	PAGE
AESTHETIC FEATURES	A1.01	EPS FEATURE OVER STUCCO ASSEMBLY..... 3
GENERAL CONSTRUCTION	G1.01	STUCCO ASSEMBLY / WOOD FRAME 3
	G1.02	STUCCO ASSEMBLY / WATERMASTER / WOOD FRAME 4
	G1.03	STUCCO ASSEMBLY / KRAK-SHIELD / WOOD FRAME 4
	G1.04	STUCCO ASSEMBLY / WATERMASTER / KRAK-SHIELD / WOOD FRAME..... 5
	G1.05	STUCCO ASSEMBLY / OPEN FRAME / WOOD FRAME..... 5
	G1.06	STUCCO ASSEMBLY / STEEL FRAME 6
	G1.07	STUCCO ASSEMBLY / WATERMASTER / STEEL FRAME 6
	G1.08	STUCCO ASSEMBLY / KRAK-SHIELD / STEEL FRAME..... 7
	G1.09	STUCCO ASSEMBLY / WATERMASTER / KRAK-SHIELD / STEEL FRAME..... 7
	G1.10	STUCCO ASSEMBLY / CMU..... 8
	G1.11	STUCCO ASSEMBLY / WATERMASTER / CMU 8
	G1.12A	ROUGH WINDOW OPENING 1 OF 4..... 9
	G1.12B	ROUGH WINDOW OPENING 2 OF 4..... 10
	G1.12C	ROUGH WINDOW OPENING 3 OF 4..... 11
	G1.12D	ROUGH WINDOW OPENING 4 OF 4..... 12
	G1.13A	ALTERNATE WINDOW FLASHING PROCEDURE 1 OF 2..... 13
	G1.13B	ALTERNATE WINDOW FLASHING PROCEDURE 2 OF 2..... 14
	G1.14	TYPICAL EXPANSION & CONTROL JOINT LOCATIONS 15
	G1.15	INSIDE CORNER..... 15
	G1.16	OUTSIDE CORNER 16
EXPANSION JOINTS	E1.01	EXPANSION JOINT..... 16
	E1.01A	EXPANSION JOINT WITH FLASHING..... 17
	E1.02	CONTROL JOINT..... 17
	E1.03	CASING BEAD TERMINATION..... 18
	E1.04	DISSIMILAR SUBSTRATE..... 18
ROOF LINE	R1.01	DOUBLE FACE PARAPET / WOOD FRAME..... 19
	R1.02	TERMINATION AT DECK GABLE FLASHING..... 19
	R1.03	TERMINATION AT SOFFIT..... 20
	R1.04	TERMINATION AT WALL DIVERTER..... 20
TERMINATIONS	T1.01	TERMINATION AT GRADE..... 21
	T1.02	TERMINATION AT PAVEMENT..... 21
WINDOWS	W1.01	TERMINATION AT WINDOW JAMB 22
	W1.02	TERMINATION AT WINDOW HEAD..... 22
	W1.03	TERMINATION AT WINDOW SILL 23
	W1.04	TERMINATION AT FINNED WINDOW SILL..... 23



PAREX ARMOURWALL 100 & 300, LAHABRA FASTWALL 100 & 300, ELREY FASTWALL & FIBER-47, TEIFS ONE COAT & SCRATCH & BROWN
 HE KRAK-SHIELD WATERMASTER

A1.01 EPS FEATURE OVER STUCCO ASSEMBLY

GENERAL CONSTRUCTION



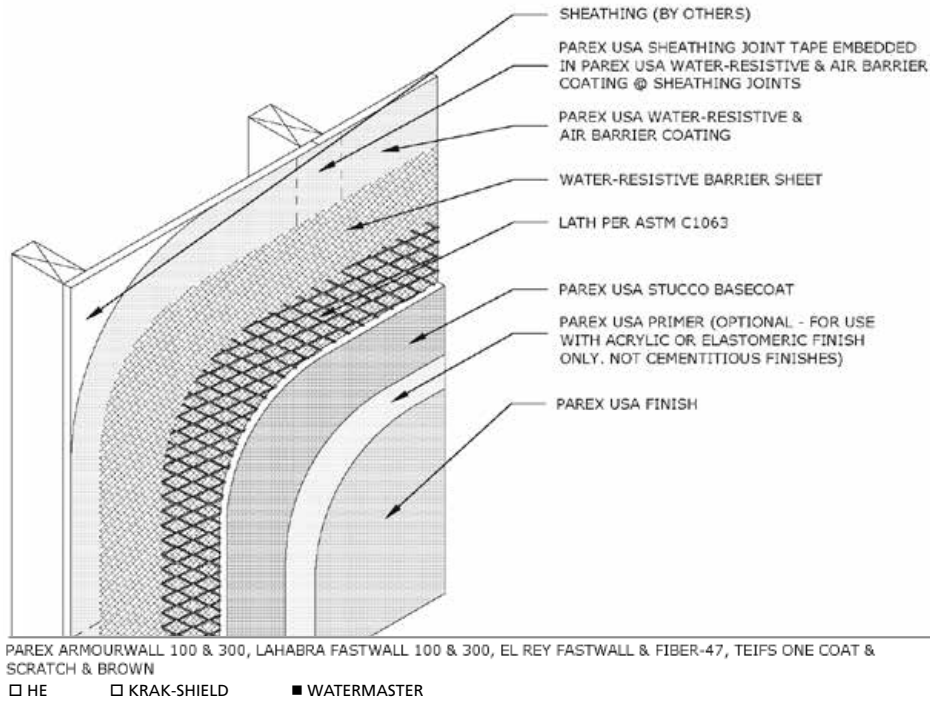
PAREX ARMOURWALL 100 & 300, LAHABRA FASTWALL 100 & 300, EL REY FASTWALL & FIBER-47, TEIFS ONE COAT & SCRATCH & BROWN
 HE KRAK-SHIELD WATERMASTER

G1.01 STUCCO ASSEMBLY-WOOD FRAME

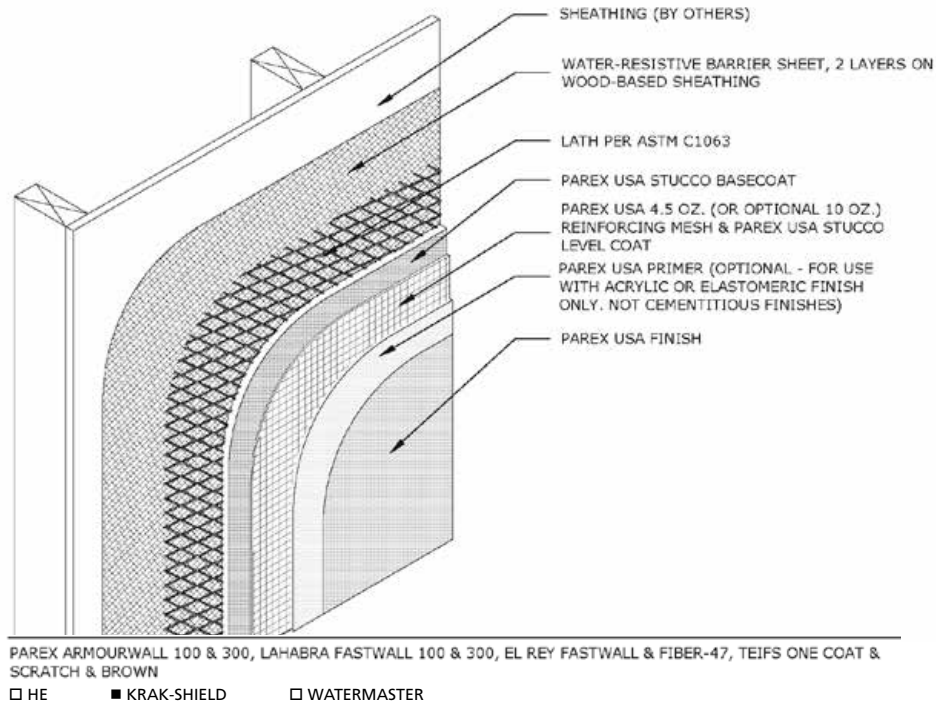
Please refer to the note on the front cover before reviewing these details.

PAREXUSA

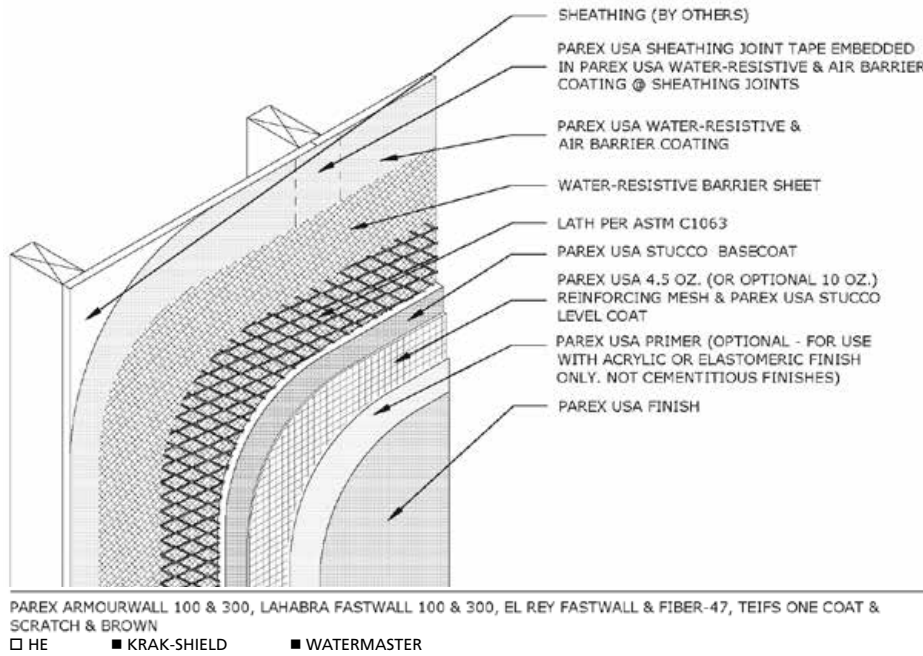
GENERAL CONSTRUCTION



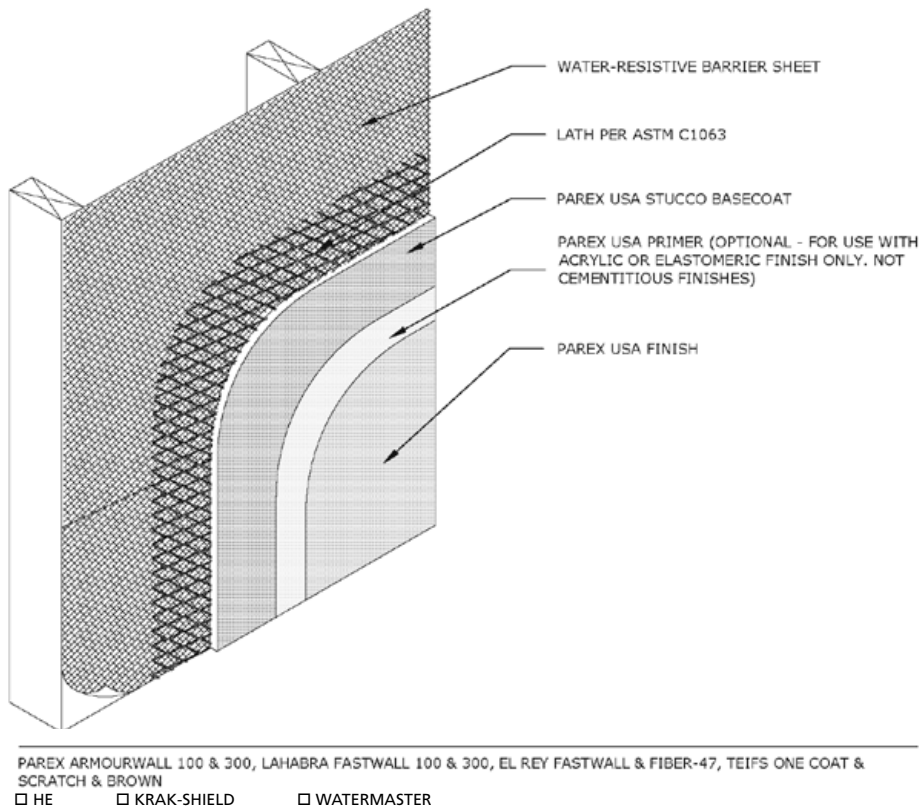
G1.02 STUCCO ASSEMBLY-WATERMASTER-WOOD FRAME



G1.03 STUCCO ASSEMBLY-KRAK-SHIELD-WOOD FRAME



G1.04 STUCCO ASSEMBLY-WATERMASTER-KRAK-SHIELD-WOOD FRAME

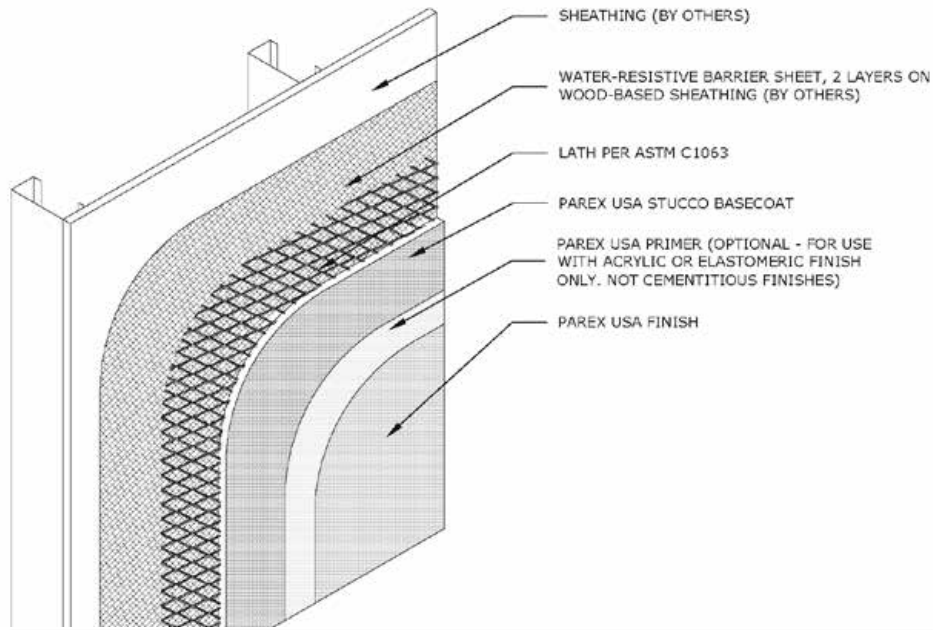


G1.05 STUCCO ASSEMBLY-OPEN FRAME-WOOD FRAME

Please refer to the note on the front cover before reviewing these details.

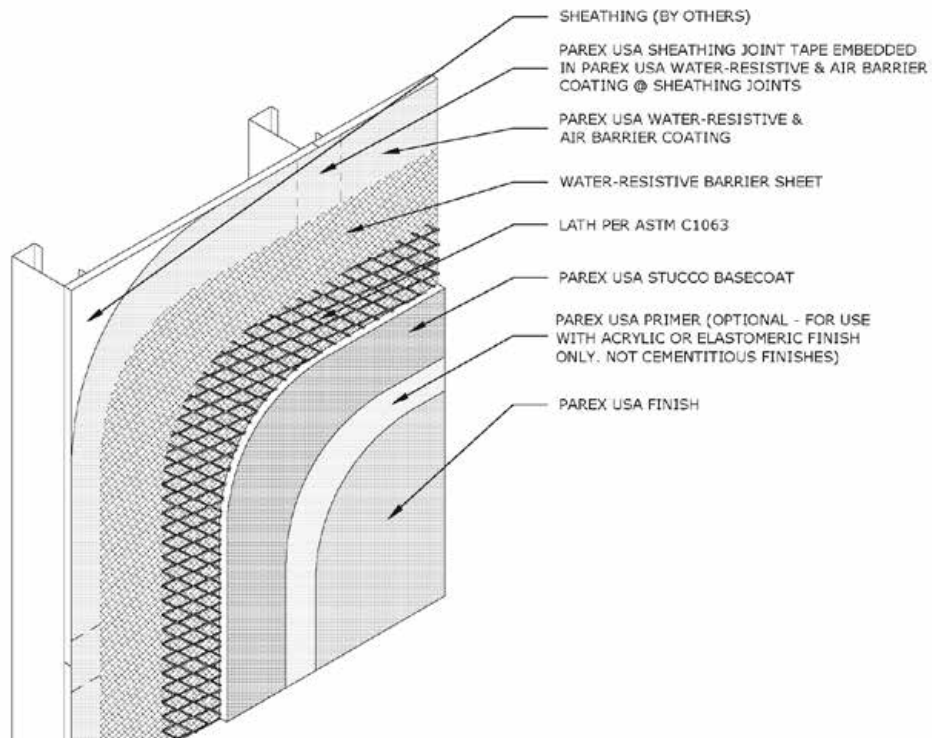
PAREXUSA

GENERAL CONSTRUCTION



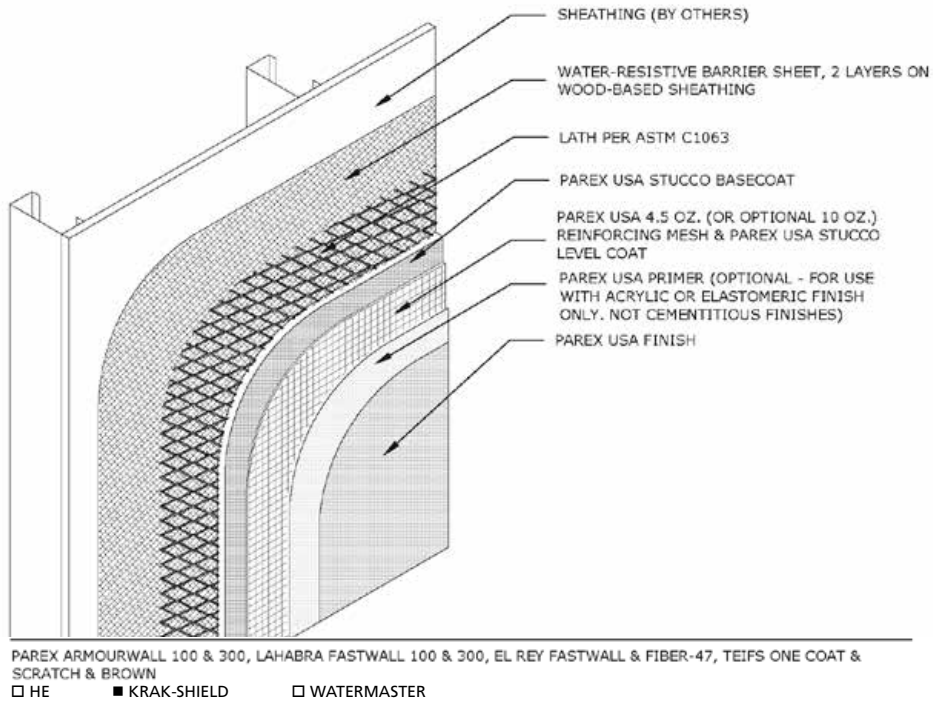
PAREX ARMOURWALL 100 & 300, LAHABRA FASTWALL 100 & 300, EL REY FASTWALL & FIBER-47, TEIFS ONE COAT & SCRATCH & BROWN
 HE KRAK-SHIELD WATERMASTER

G1.06 STUCCO ASSEMBLY-STEEL FRAME

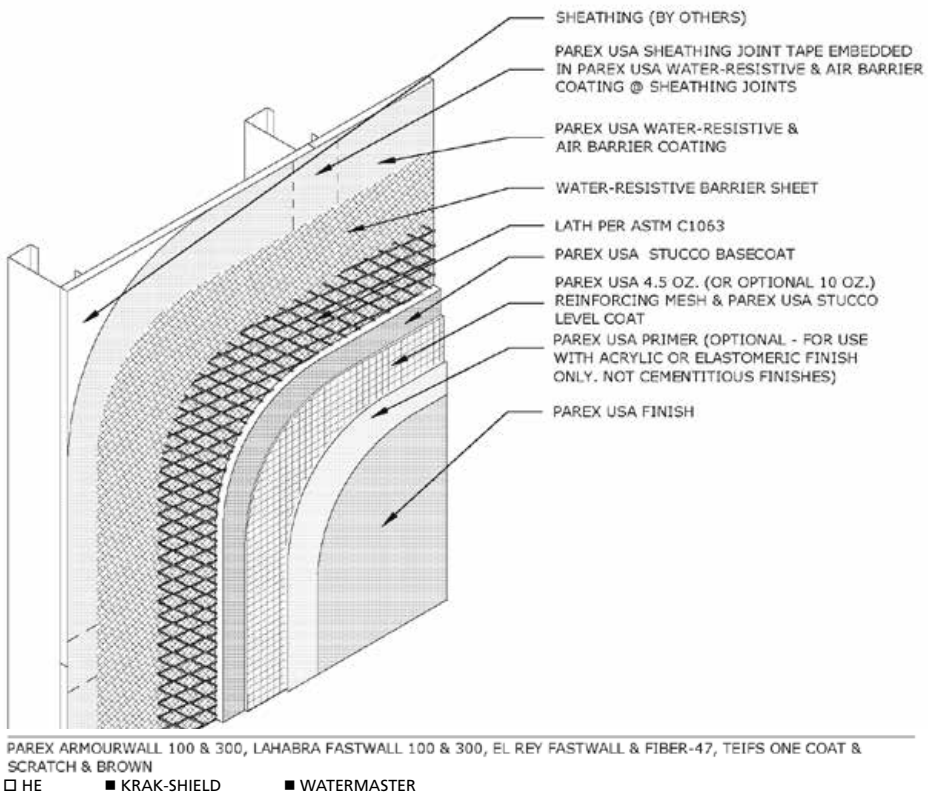


PAREX ARMOURWALL 100 & 300, LAHABRA FASTWALL 100 & 300, EL REY FASTWALL & FIBER-47, TEIFS ONE COAT & SCRATCH & BROWN
 HE KRAK-SHIELD WATERMASTER

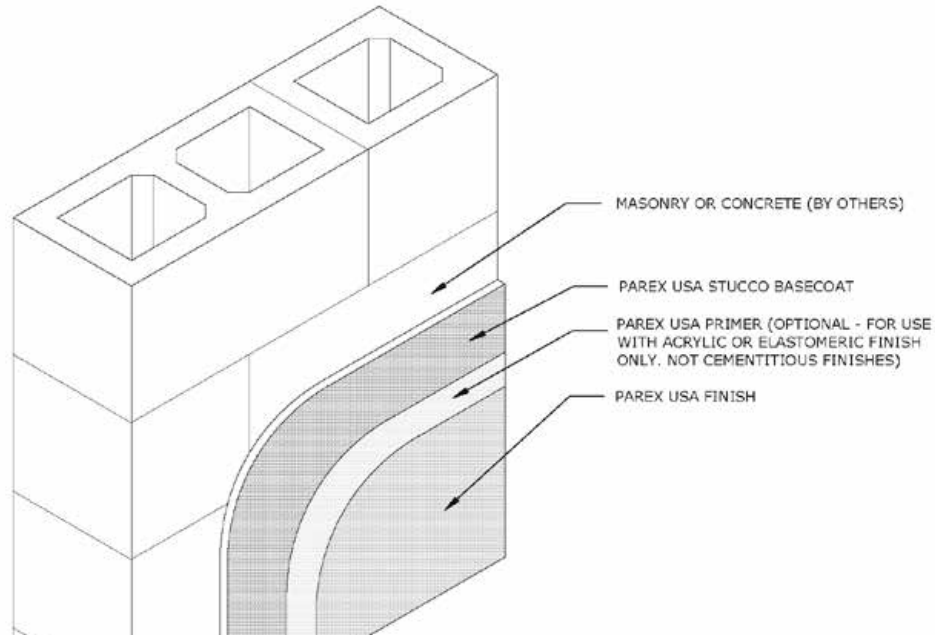
G1.07 STUCCO ASSEMBLY-WATERMASTER-STEEL FRAME



G1.08 STUCCO ASSEMBLY-KRAK-SHIELD-STEEL FRAME



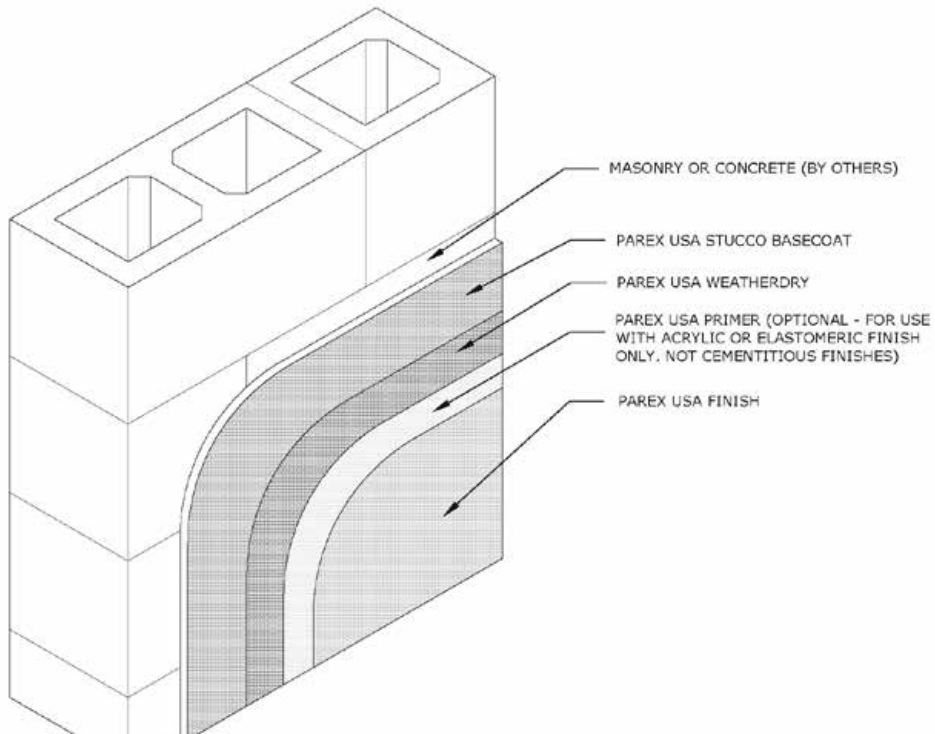
G1.09 STUCCO ASSEMBLY-WATERMASTER-KRAK-SHIELD-STEEL FRAME



PAREX ARMOURWALL 100 & 300, LAHABRA FASTWALL 100 & 300, EL REY FASTWALL & FIBER-47, TEIFS ONE COAT & SCRATCH & BROWN

HE KRAK-SHIELD WATERMASTER

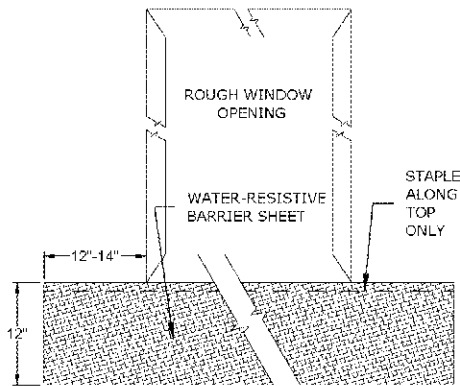
G1.10 STUCCO ASSEMBLY-CMU



PAREX ARMOURWALL 100 & 300, LAHABRA FASTWALL 100 & 300, EL REY FASTWALL & FIBER-47, TEIFS ONE COAT & SCRATCH & BROWN

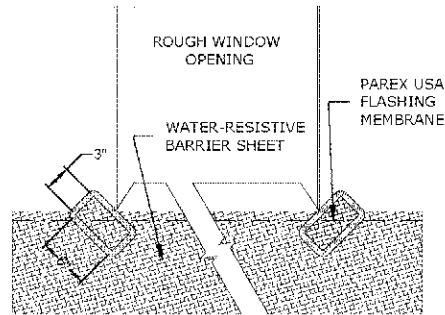
HE KRAK-SHIELD WATERMASTER

G1.11 STUCCO ASSEMBLY-WATERMASTER-CMU



**STEP 1:
WATER-RESISTIVE BARRIER SHEET UNDER SILL**

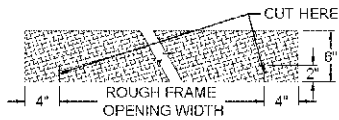
CUT WATER-RESISTIVE BARRIER SHEET TO APPROXIMATE SIZE SHOWN & STAPLE INTO PLACE AT THE BOTTOM OF THE ROUGH OPENING. WATER-RESISTIVE BARRIER SHEET SHOULD ONLY BE STAPLED ALONG THE TOP EDGE.



**STEP 2:
INSTALLING MEMBRANE "BANDAGES"**

CUT "BANDAGES" TO APPROXIMATE SIZE INDICATED.

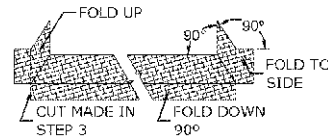
CUT PAREX USA PAREX USA FLASHING MEMBRANE DIAGONALLY AT SILL CORNERS AS SHOWN. SHEATHING OR WATER-RESISTIVE BARRIER SHEET SHOULD NOT BE VISIBLE AT THE CORNERS OF ROUGH OPENING.



**STEP 3:
CUTTING PAREX USA FLASHING MEMBRANE**

CUT A PIECE OF PAREX USA FLASHING MEMBRANE 8" LONGER THAN THE ROUGH OPENING WIDTH. MAKE TWO SMALL CUTS 2" LONG THROUGH THE MEMBRANE AS SHOWN. MAKE 2 SMALL CUTS THROUGH THE MEMBRANE AS SHOWN.

NOTE: 2" X 6" FRAMING REQUIRES 12" WIDE MEMBRANE CUTS SHOULD BE 6". AT LEAST 2" WIDER THAN THE SUBSTRATE WALL.



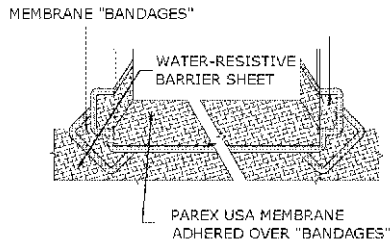
**STEP 4:
FOLDING PAREX USA FLASHING MEMBRANE**

FOLD PAREX USA FLASHING MEMBRANE TO CONFORM WITH ROUGH OPENING. PEEL PROTECTIVE BACKER TO EXPOSE ADHESIVE.

PAREX ARMOURWALL 100 & 300, LAHABRA FASTWALL 100 & 300, ELREY FASTWALL & FIBER-47, TEIFS ONE COAT & SCRATCH & BROWN

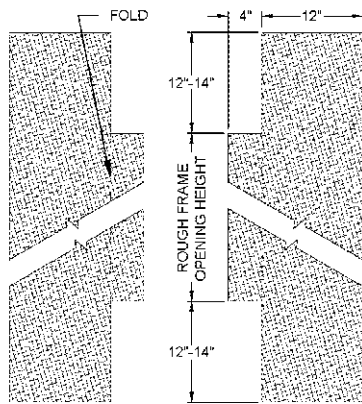
HE KRAK-SHIELD WATERMASTER

G1.12A ROUGH WINDOW OPENING 1 OF 4



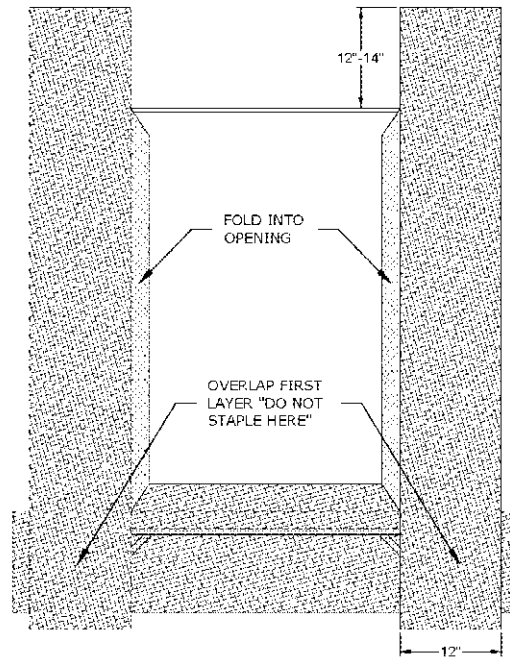
**STEP 5:
INSTALLING PAREX USA SHEATHING JOINT TAPE**

INSTALL THE PAREX USA FLASHING MEMBRANE AT THE ROUGH OPENING. MEMBRANE SHOULD LAP OVER THE PREVIOUSLY INSTALLED "BANDAGES" & WATER-RESISTIVE BARRIER SHEET.



**STEP 6:
CUTTING WATER-RESISTIVE BARRIER SHEET FOR JAMBS**

CUT WATER-RESISTIVE BARRIER SHEET TO FIT ROUGH OPENING JAMB.



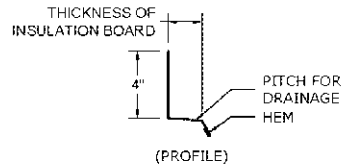
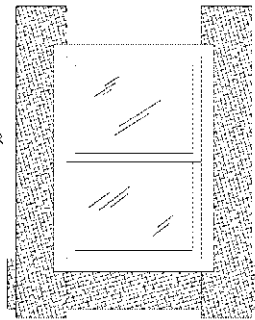
**STEP 7:
INSTALLING WATER-RESISTIVE BARRIER SHEET AT JAMBS**

FOLD WATER-RESISTIVE BARRIER SHEET INTO ROUGH OPENING. BOTTOM LEG MUST OVERLAP FIRST LAYER AS SHOWN. DO NOT STAPLE IMMEDIATELY BELOW THE SILL JAMB CORNERS.

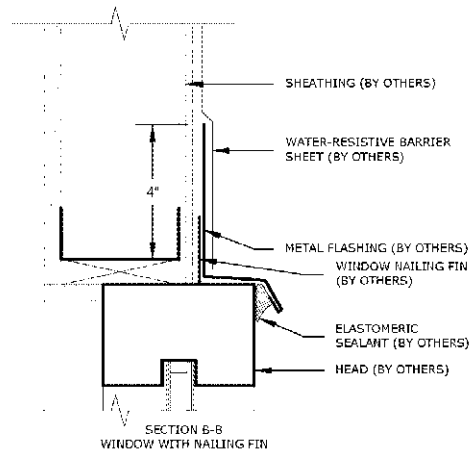
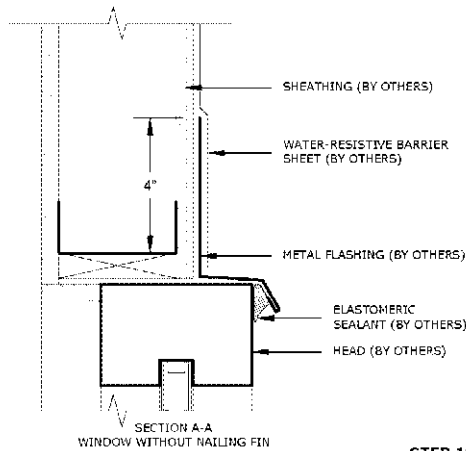
PAREX ARMOURWALL 100 & 300, LAHABRA FASTWALL 100 & 300, ELREY FASTWALL & FIBER-47, TEIFS ONE COAT & SCRATCH & BROWN
 HE KRAK-SHIELD WATERMASTER

G1.12B ROUGH WINDOW OPENING 2 OF 4

**STEP 8:
INSTALLING WINDOW**
AFTER THE STRIPS OF WATER-RESISTIVE BARRIER SHEET HAVE BEEN INSTALLED AT THE STILL AND JAMBS AS SHOWN, THE WINDOW CAN BE INSTALLED.



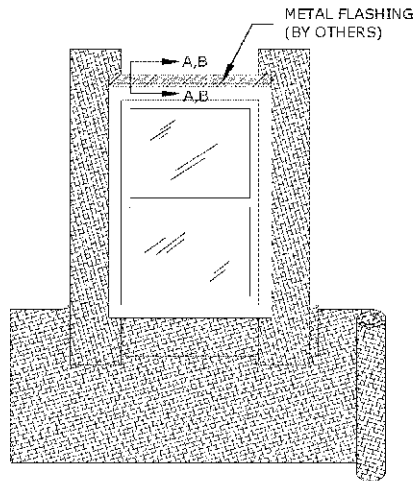
**STEP 9:
METAL FLASHING PROFILE**
FLASHING SHOULD BE FABRICATED IN THE PROFILE SHOWN. LENGTH OF FLASHING IS 1" LONGER THAN THE WIDTH OF THE WINDOW FRAME. END DAMS SHOULD BE TURNED UPWARD 5/8" AS SHOWN.



**STEP 10:
INSTALLATION OF METAL HEAD FLASHING**
LENGTH OF THE FLASHING IS DEPENDENT ON THE TYPE OF WINDOW USED. SECTION A-A & B-B ILLUSTRATE TWO TYPES OF WINDOWS. FLASHING SHOULD BE INSTALLED AS ILLUSTRATED. FOR ANY UNUSUAL CONSTRUCTION PLEASE CONTACT PAREX USA TECHNICAL SERVICES.

PAREX ARMOURWALL 100 & 300, LAHABRA FASTWALL 100 & 300, ELREY FASTWALL & FIBER-47, TEIF'S ONE COAT & SCRATCH & BROWN
 HE KRAK-SHIELD WATERMASTER

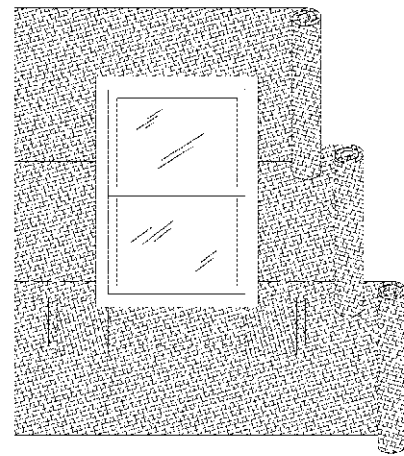
G1.12C ROUGH WINDOW OPENING 3 OF 4



**STEP 11:
INSTALLING ROLLS OF WATER-RESISTIVE BARRIER**

INSTALL ROLLS OF WATER-RESISTIVE BARRIER HORIZONTALLY IN A SHINGLE FASHION. EACH SUCCEEDING COURSE SHOULD OVERLAP THE PREVIOUS COURSE BY 2" MIN.

NOTE: THE STRIPS OF WATER-RESISTIVE BARRIER PREVIOUSLY INSTALLED AT THE SILL OVERLAPS THE HORIZONTALLY INSTALLED ROLLED WATER-RESISTIVE BARRIER BELOW THE SILL FOR POSITIVE DRAINAGE.



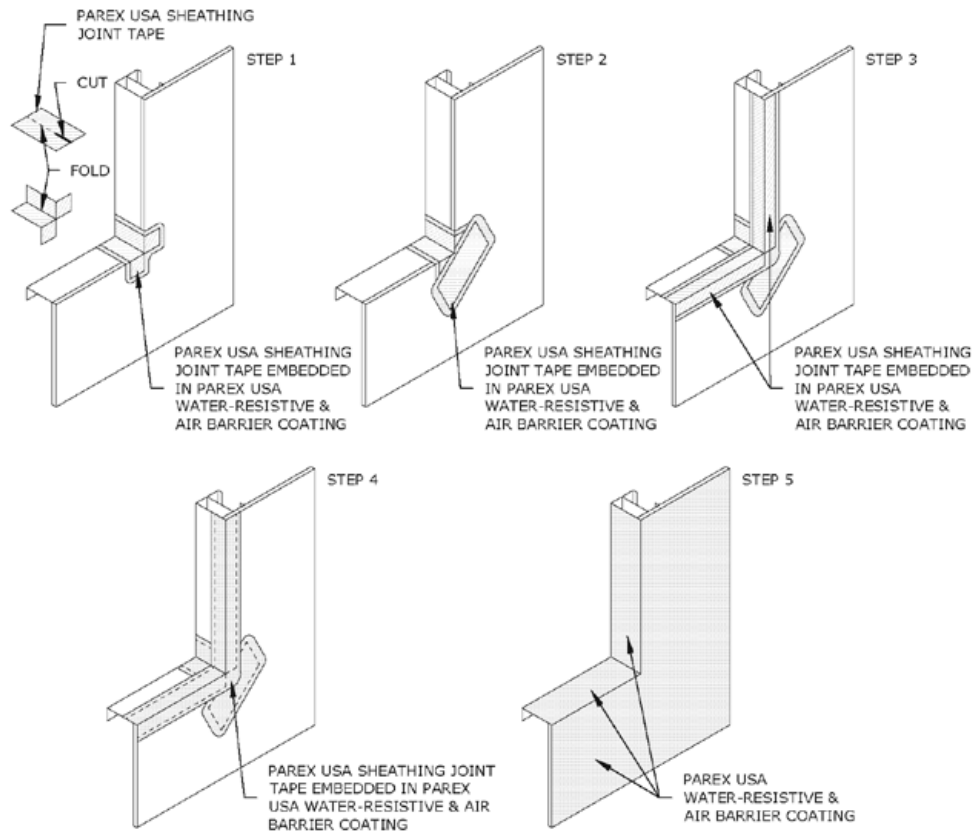
**STEP 12:
INSTALLING ROLLS OF WATER-RESISTIVE BARRIER CONT.**

CONTINUE TO LAP EACH SUCCEEDING COURSE AS ILLUSTRATED FOR POSITIVE DRAINAGE. WHERE VERTICAL SPLICES OCCUR, LAP THE WATER-RESISTIVE BARRIER SHEETS A MIN. OF 6". VERTICAL SPLICES IN THE WATER-RESISTIVE BARRIER SHEET SHOULD NOT OCCUR WITHIN 2 FT. OF THE WINDOW JAMBS. NOTE THAT THE SUCCEEDING COURSES LAP OVER THE REMAINDER OF THE WATER-RESISTIVE BARRIER STRIPS AND THE METAL FLASHING AT THE HEAD.

PAREX ARMOURWALL 100 & 300, LAHABRA FASTWALL 100 & 300, ELREY FASTWALL & FIBER-47, TEIFS ONE COAT & SCRATCH & BROWN

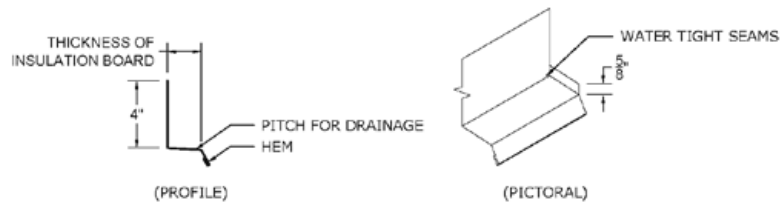
HE KRAK-SHIELD WATERMASTER

G1.12D ROUGH WINDOW OPENING 4 OF 4



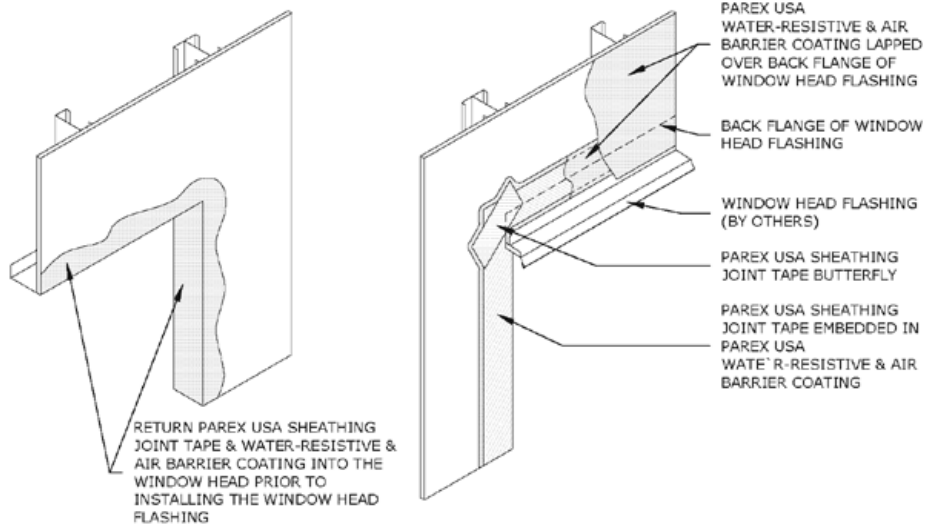
PAREX ARMOURWALL 100 & 300, LAHABRA FASTWALL 100 & 300, ELREY FASTWALL & FIBER-47, TEIFS ONE COAT & SCRATCH & BROWN
 HE KRAK-SHIELD WATERMASTER

G1.13A ALTERNATE WINDOW FLASHING PROCEDURE 1 OF 2



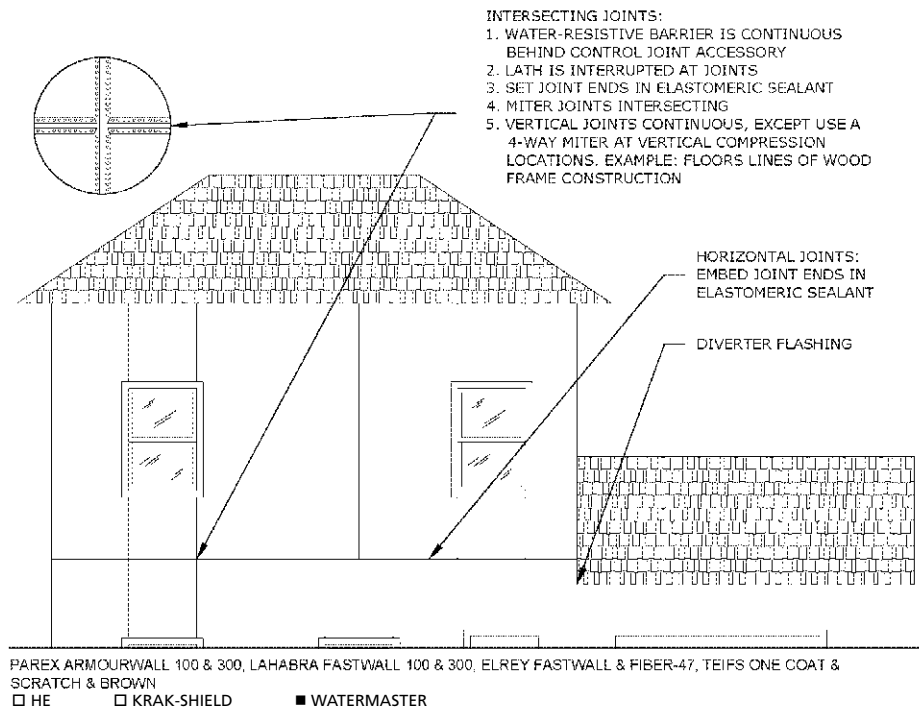
METAL FLASHING PROFILE

FLASHING SHOULD BE FABRICATED IN THE PROFILE SHOWN. LENGTH OF FLASHING IS 1" LONGER THAN THE WIDTH OF THE WINDOW FRAME. END DAMS SHOULD BE TURNED UPWARD 5/8" AS SHOWN.

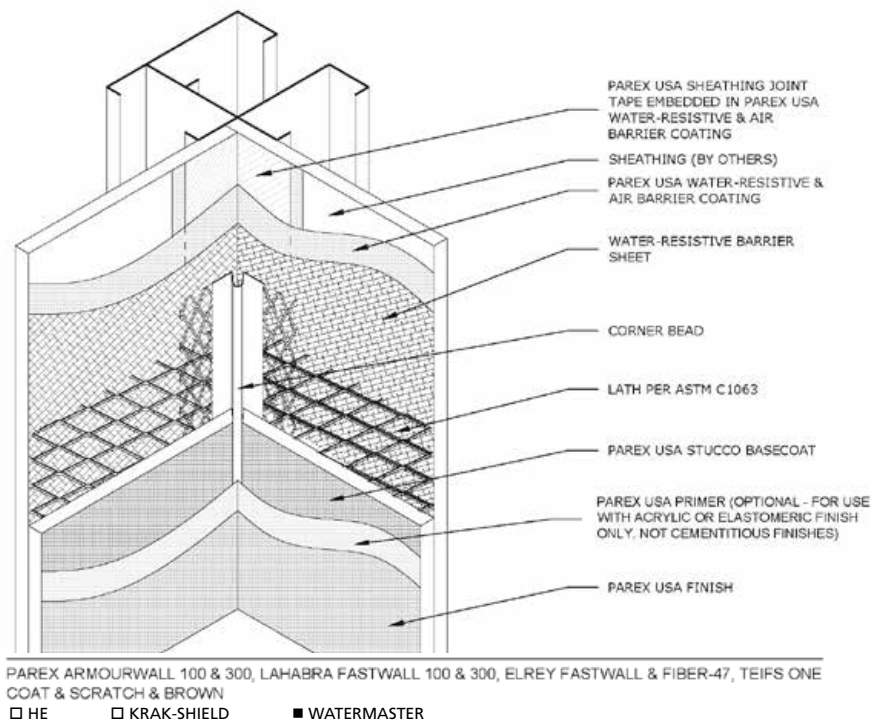


PAREX ARMOURWALL 100 & 300, LAHABRA FASTWALL 100 & 300, ELREY FASTWALL & FIBER-47, TEIFS ONE COAT & SCRATCH & BROWN
 HE KRAK-SHIELD WATERMASTER

G1.13B ALTERNATE WINDOW FLASHING PROCEDURE 2 OF 2



G1.14 TYPICAL EXPANSION AND CONTROL JOINT LOCATIONS

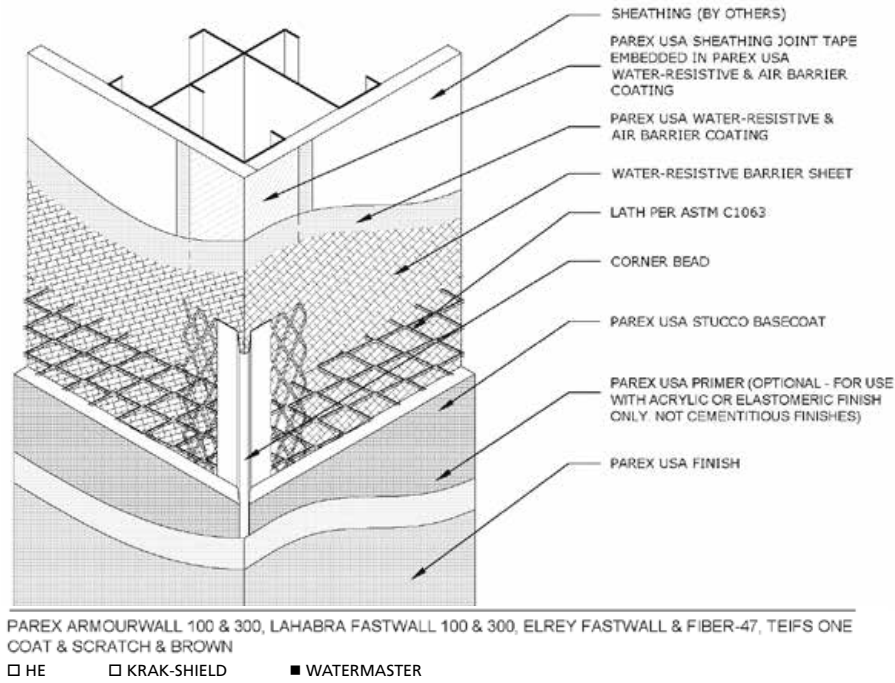


G1.15 INSIDE CORNER

Please refer to the note on the front cover before reviewing these details.

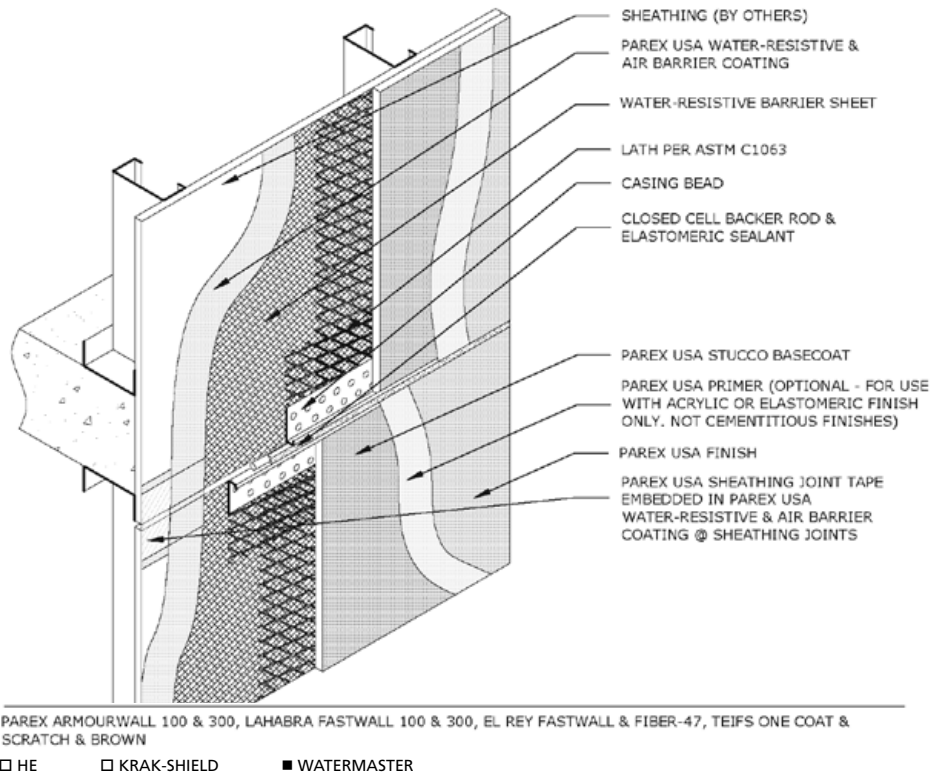
PAREXUSA

GENERAL CONSTRUCTION



G1.16 OUTSIDE CORNER

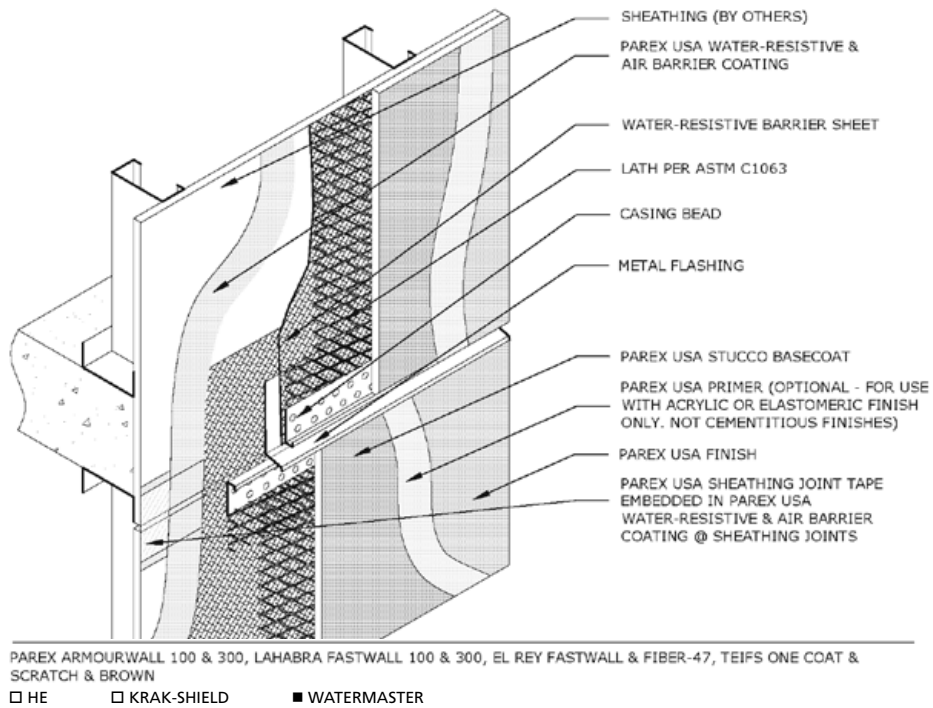
EXPANSION JOINTS



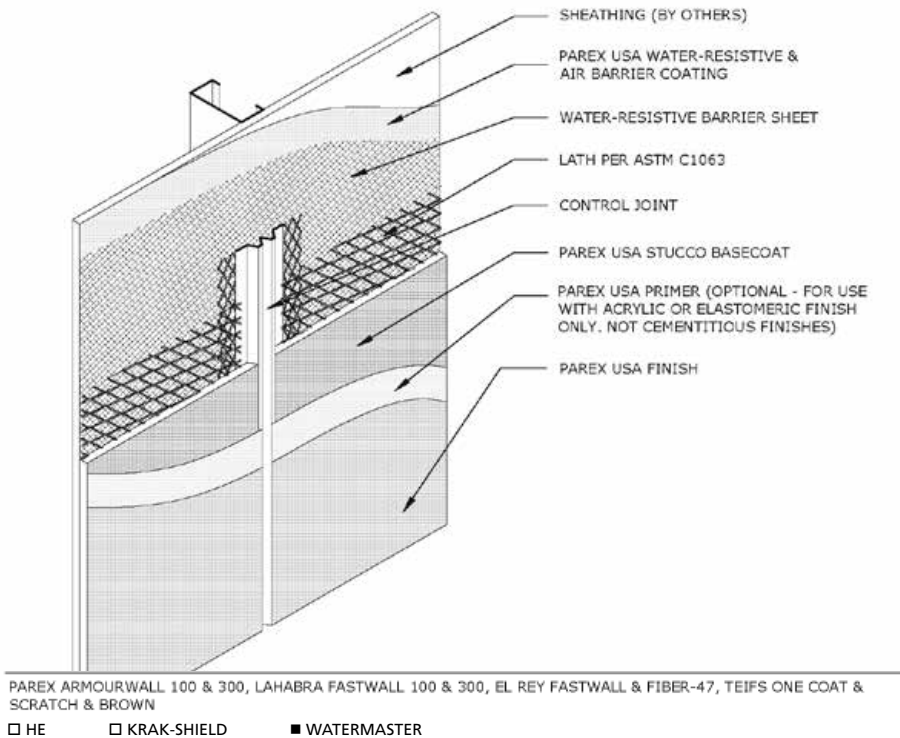
E1.01 EXPANSION JOINT

PAREXUSA

EXPANSION JOINTS

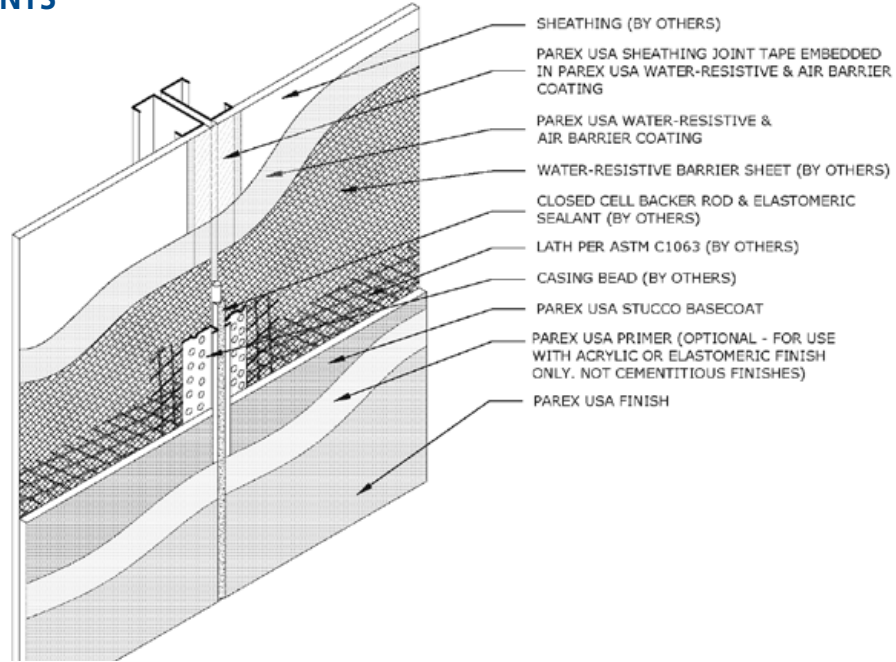


E1.01A EXPANSION JOINT WITH FLASHING



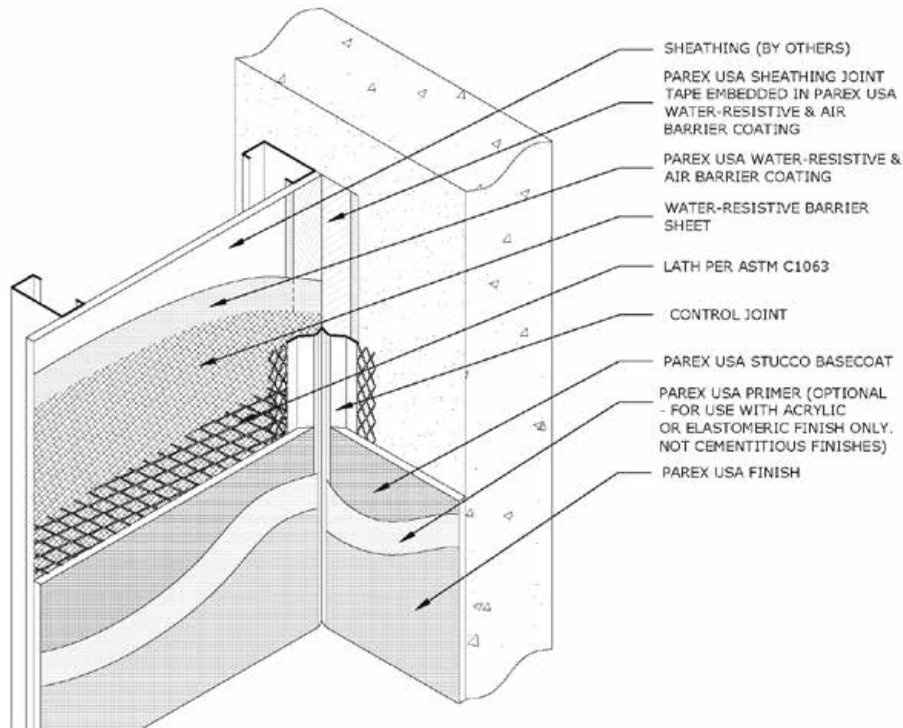
E1.02 CONTROL JOINT

Please refer to the note on the front cover before reviewing these details.



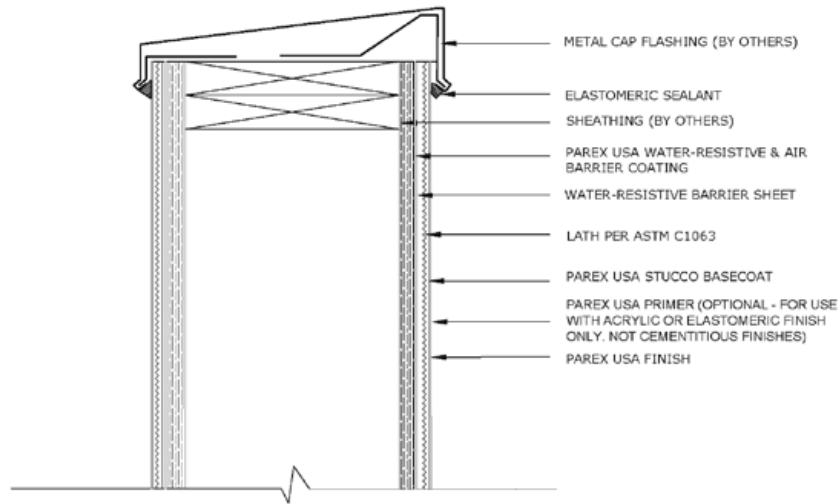
PAREX ARMOURWALL 100 & 300, LAHABRA FASTWALL 100 & 300, EL REY FASTWALL & FIBER-47, TEIFS ONE COAT & SCRATCH & BROWN
 □ HE □ KRAK-SHIELD ■ WATERMASTER

E1.03 CASING BEAD TERMINATION



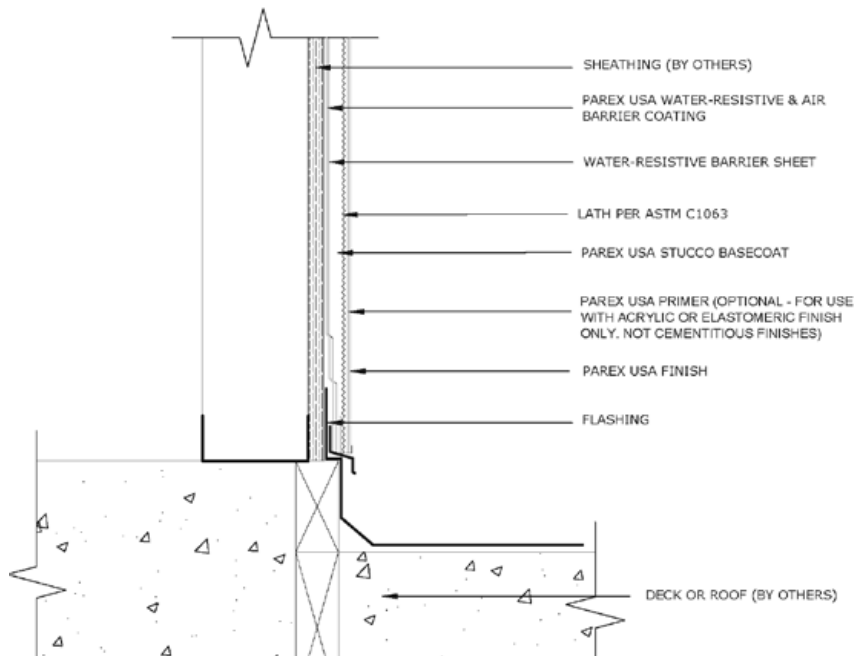
PAREX ARMOURWALL 100 & 300, LAHABRA FASTWALL 100 & 300, EL REY FASTWALL & FIBER-47, TEIFS ONE COAT & SCRATCH & BROWN
 □ HE □ KRAK-SHIELD ■ WATERMASTER

E1.04 DISSIMILAR SUBSTRATE



PAREX ARMOURWALL 100 & 300, LAHABRA FASTWALL 100 & 300, ELREY FASTWALL & FIBER-47, TEIFS ONE COAT & SCRATCH & BROWN
 HE KRAK-SHIELD WATERMASTER

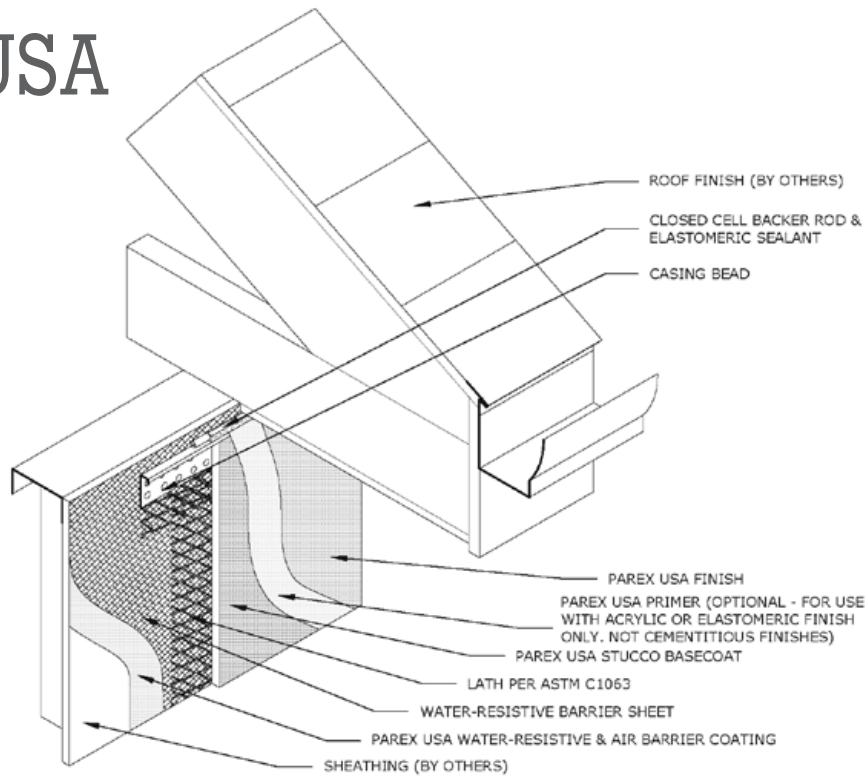
R1.01 DOUBLE FACED PARAPET-WOOD FRAME



PAREX ARMOURWALL 100 & 300, LAHABRA FASTWALL 100 & 300, ELREY FASTWALL & FIBER-47, TEIFS ONE COAT & SCRATCH & BROWN
 HE KRAK-SHIELD WATERMASTER

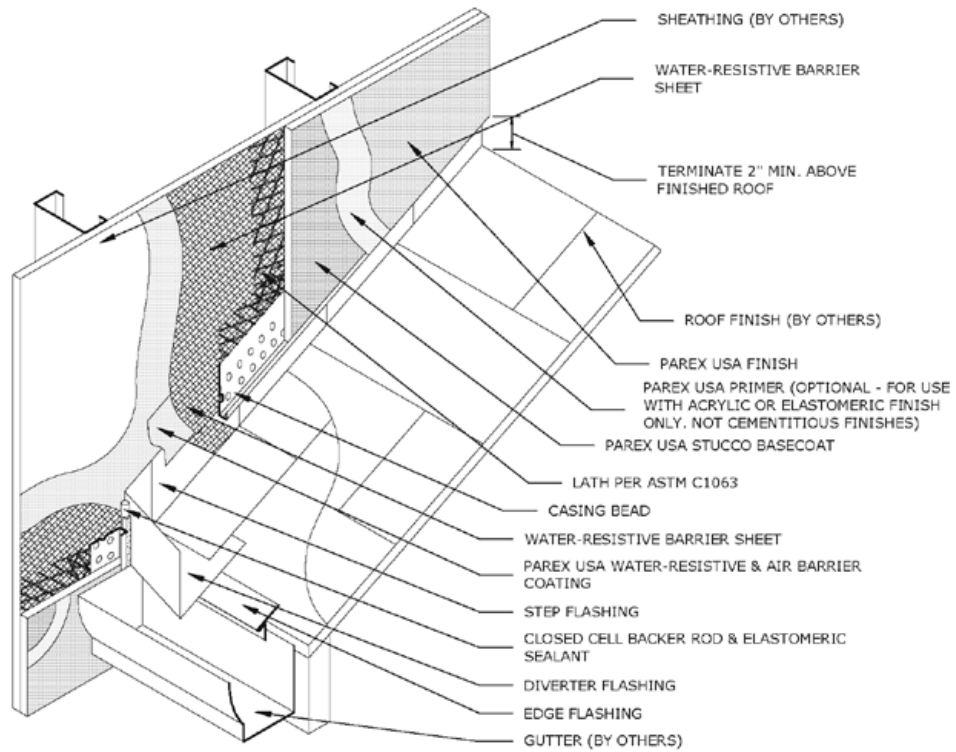
R1.02 TERMINATION AT DECK GABLE FLASHING

Please refer to the note on the front cover before reviewing these details.



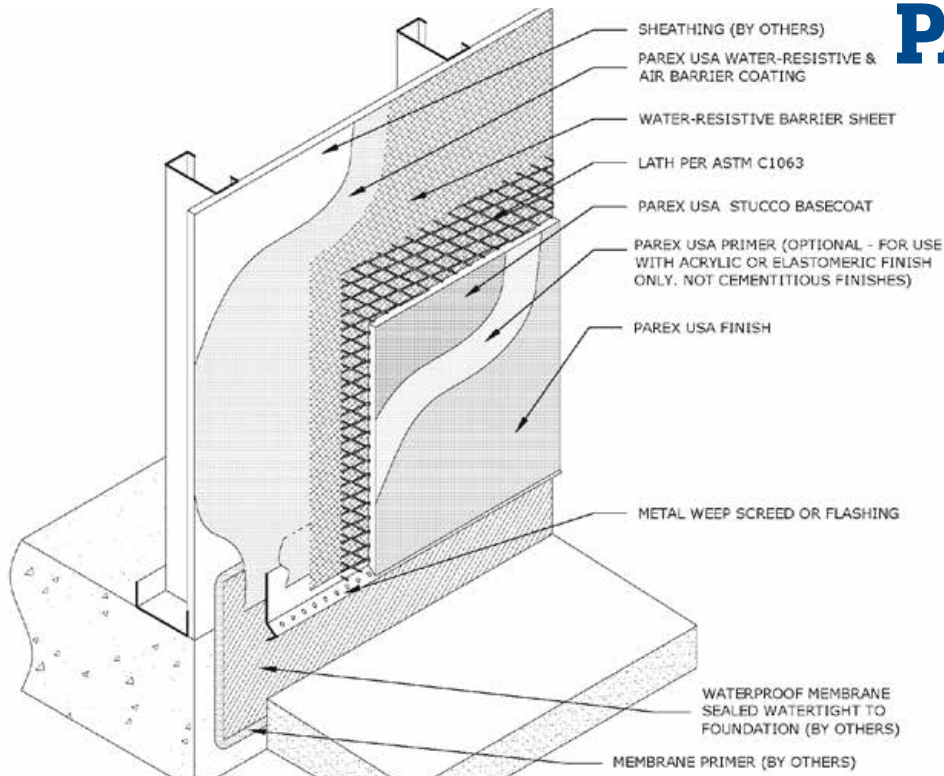
PAREX ARMOURWALL 100 & 300, LAHABRA FASTWALL 100 & 300, EL REY FASTWALL & FIBER-47, TEIFS ONE COAT & SCRATCH & BROWN
 HE KRAK-SHIELD WATERMASTER

R1.03 TERMINATION AT SOFFIT



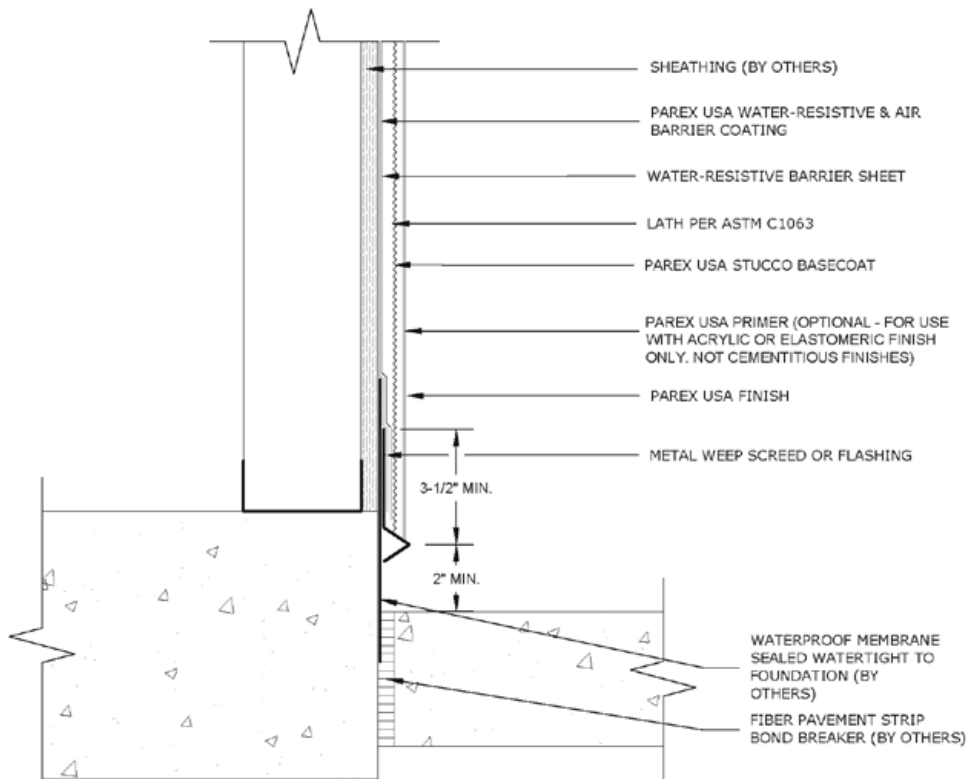
PAREX ARMOURWALL 100 & 300, LAHABRA FASTWALL 100 & 300, EL REY FASTWALL & FIBER-47, TEIFS ONE COAT & SCRATCH & BROWN
 HE KRAK-SHIELD WATERMASTER

R1.04 TERMINATION AT WALL DIVERTER



PAREX ARMOURWALL 100 & 300, LAHABRA FASTWALL 100 & 300, EL REY FASTWALL & FIBER-47, TEIFS ONE COAT & SCRATCH & BROWN
 HE KRAK-SHIELD WATERMASTER

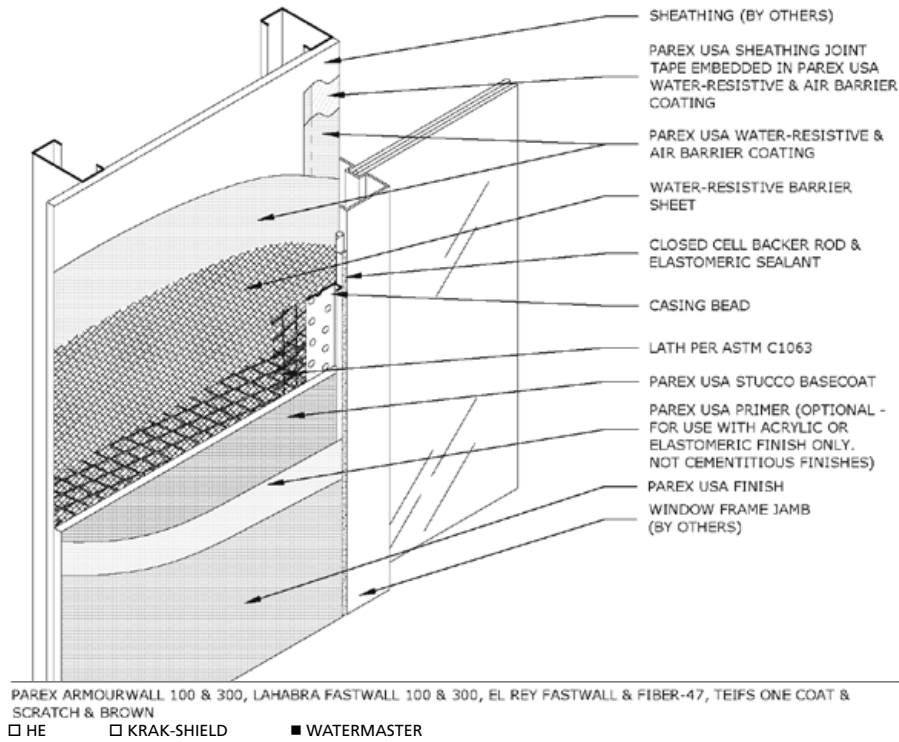
T1.01 TERMINATION AT GRADE



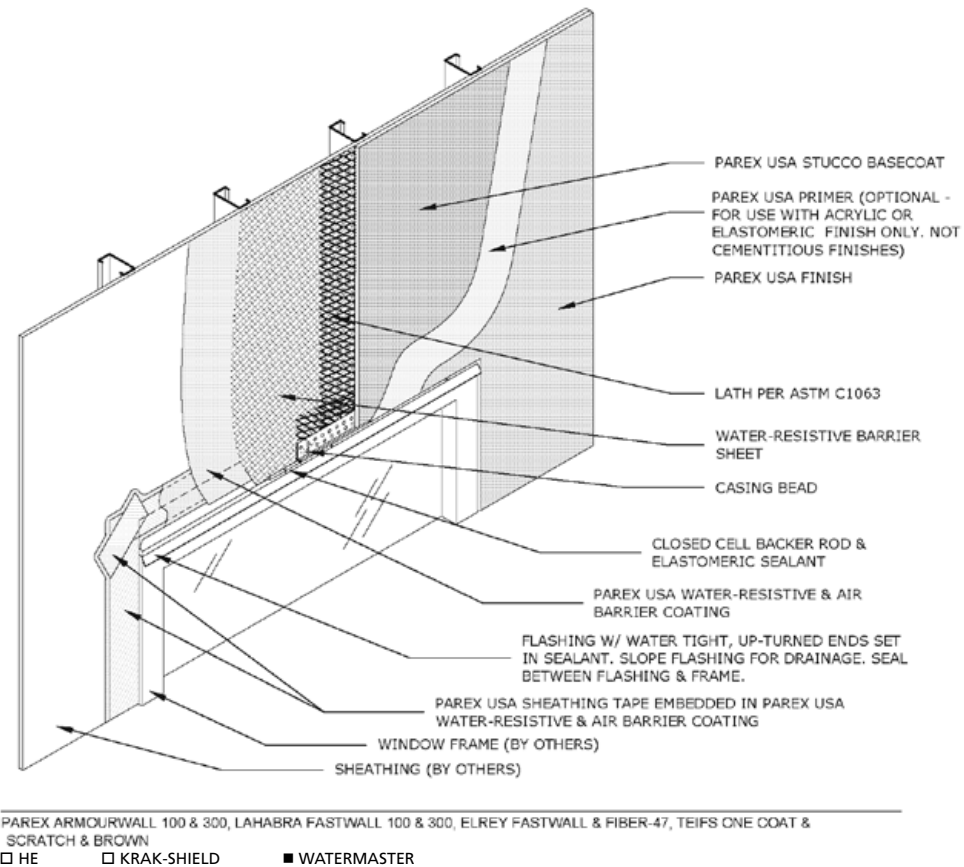
PAREX ARMOURWALL 100 & 300, LAHABRA FASTWALL 100 & 300, ELREY FASTWALL & FIBER-47, TEIFS ONE COAT & SCRATCH & BROWN
 HE KRAK-SHIELD WATERMASTER

T1.02 TERMINATION AT PAVEMENT

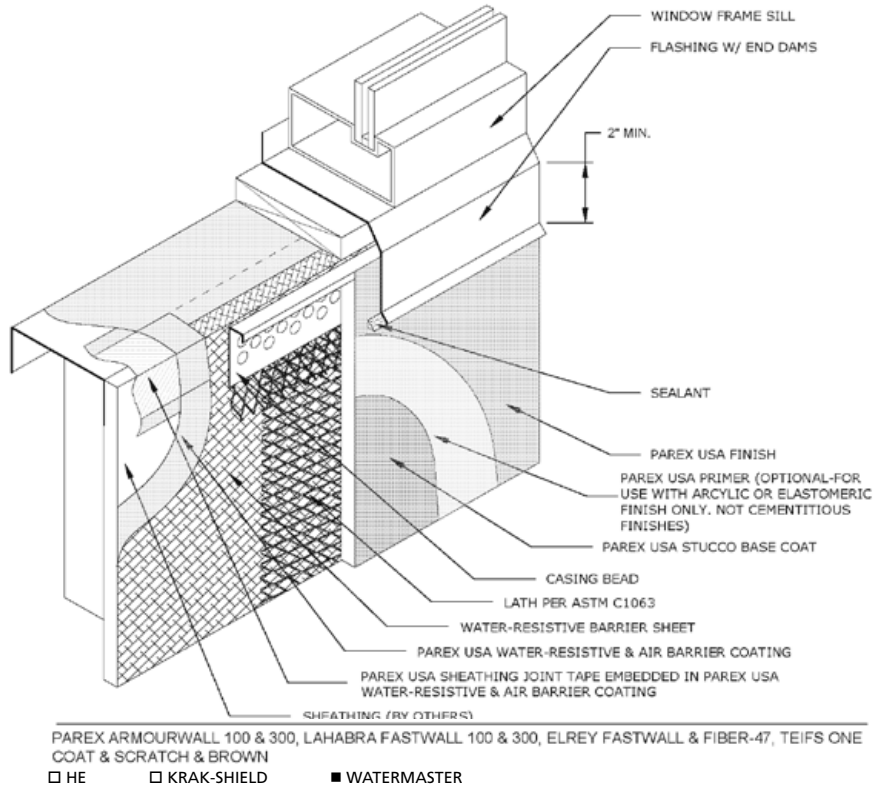
Please refer to the note on the front cover before reviewing these details.



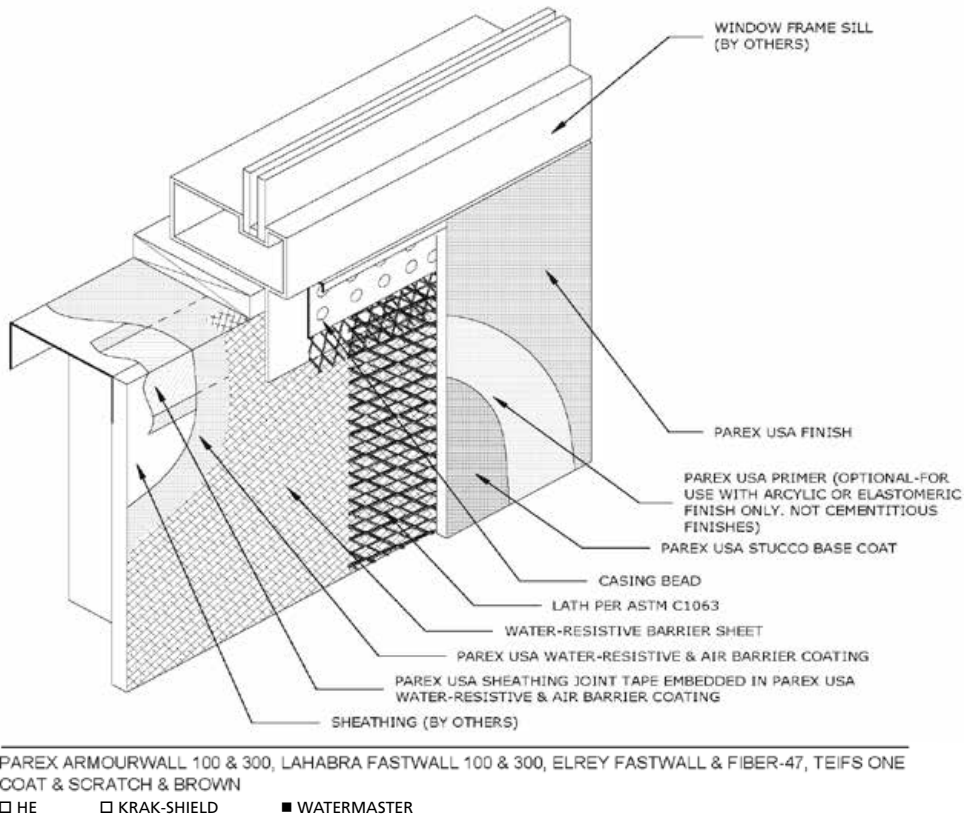
W1.01 TERMINATION AT WINDOW JAMB



W1.02 TERMINATION AT WINDOW HEAD



W1.03 TERMINATION AT WINDOW SILL



W1.04 TERMINATION AT FINNED WINDOW SILL

Please refer to the note on the front cover before reviewing these details.

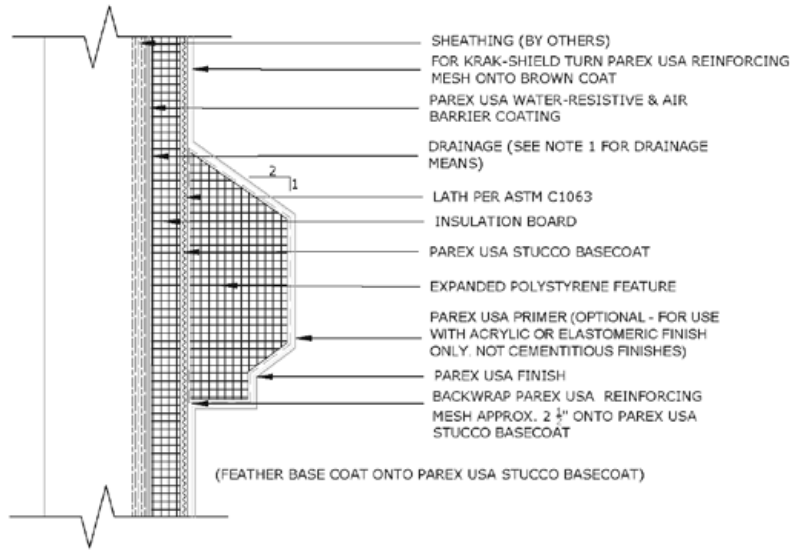


SECTION 2 CONTENT INSULATED (HE) GENERAL DETAILS

SUBJECT	DETAIL	PAGE
AESTHETIC FEATURES	A1.01 HE / EPS FEATURE OVER STUCCO ASSEMBLY	25
GENERAL CONSTRUCTION	G1.01 HE / STUCCO ASSEMBLY / WOOD FRAME	25
	G1.02 HE / STUCCO ASSEMBLY / WATERMASTER / WOOD FRAME	26
	G1.03 HE / STUCCO ASSEMBLY / KRAK-SHIELD / WOOD FRAME...	26
	G1.04 HE / STUCCO ASSEMBLY / WATERMASTER / KRAK-SHIELD / WOOD FRAME.....	27
	G1.05 HE / STUCCO ASSEMBLY / OPEN FRAME / WOOD FRAME ...	27
	G1.06 HE / STUCCO ASSEMBLY / WATERMASTER / STEEL FRAME..	28
	G1.07 HE / STUCCO ASSEMBLY / KRAK-SHIELD / STEEL FRAME	28
	G1.08 HE / STUCCO ASSEMBLY / WATERMASTER / KRAK-SHIELD / STEEL FRAME.....	29
	G1.09 HE / STUCCO ASSEMBLY / CMU	29
	G1.10 HE / STUCCO ASSEMBLY / WATERMASTER / CMU	30
	G1.11 HE / STUCCO ASSEMBLY / KRAK-SHIELD / CMU	30
	G1.12 HE / STUCCO ASSEMBLY / WATERMASTER / KRAK-SHIELD / CMU	31
	G1.13 HE / STUCCO ASSEMBLY / DRAINAGE MAT / STEEL FRAME	31
	G1.14 HE / STUCCO ASSEMBLY / DRAINAGE TYPE WRAP / STEEL FRAME	32
	G1.15 HE / STUCCO ASSEMBLY / GROOVED BOARD / STEEL FRAME	32
	G1.16 HE / STUCCO ASSEMBLY / VERTICAL RIBBONS / STEEL FRAME	33
	G1.17 HE / INSIDE CORNER	33
	G1.18 HE / OUTSIDE CORNER.....	34
EXPANSION JOINTS	E1.01 HE / EXPANSION JOINT	34
	E1.02 HE / DISSIMILAR SUBSTRATE	35
	E1.03 HE / CASING BEAD TERMINATION	35
ROOF LINE	R1.01 HE / DOUBLE FACED PARAPET / WOOD FRAME	36
	R1.02 HE / TERMINATION AT DECK GABLE FLASHING	36
	R1.03 HE / TERMINATION AT SOFFIT	37
	R1.04 HE / TERMINATION AT WALL DIVERTER	37
TERMINATIONS	T1.01 HE / TERMINATION AT GRADE	38
	T1.02 HE / TERMINATION AT PAVEMENT	38
WINDOWS	W1.01 HE / TERMINATION AT WINDOW JAMB	39
	W1.02 HE / TERMINATION AT WINDOW HEAD	39
	W1.03 HE / TERMINATION AT WINDOW SILL.....	40

INSULATED (HE) GENERAL DETAILS

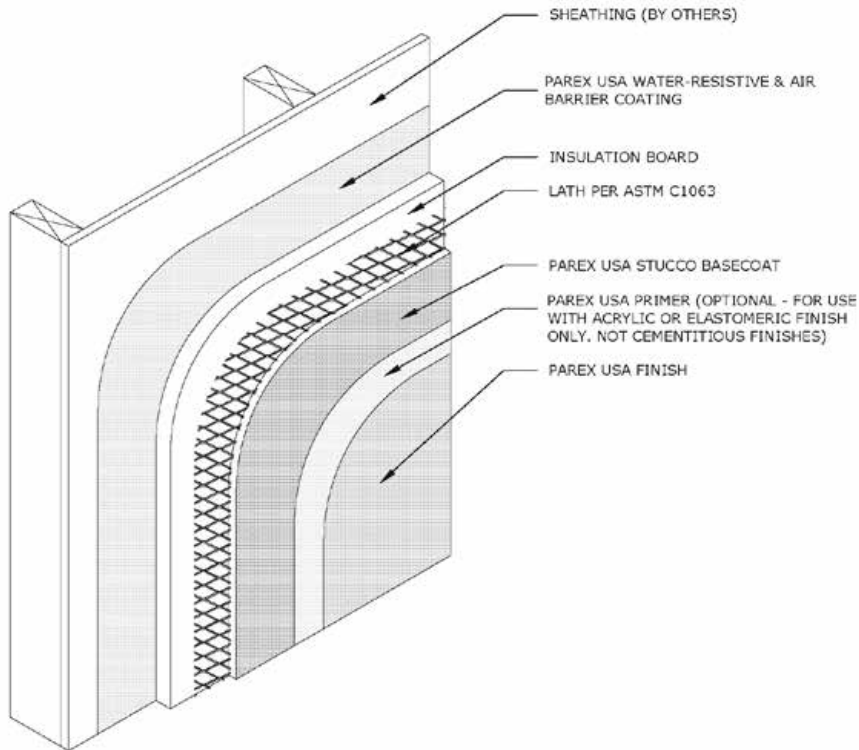
AESTHETIC FEATURES



PAREX ARMOURWALL 100 & 300, LAHABRA FASTWALL 100 & 300, ELREY FASTWALL & FIBER-47, TEIFS ONE COAT & SCRATCH & BROWN
 ■ HE □ KRAK-SHIELD ■ WATERMASTER

A1.01 HE-EPS FEATURE OVER STUCCO ASSEMBLY

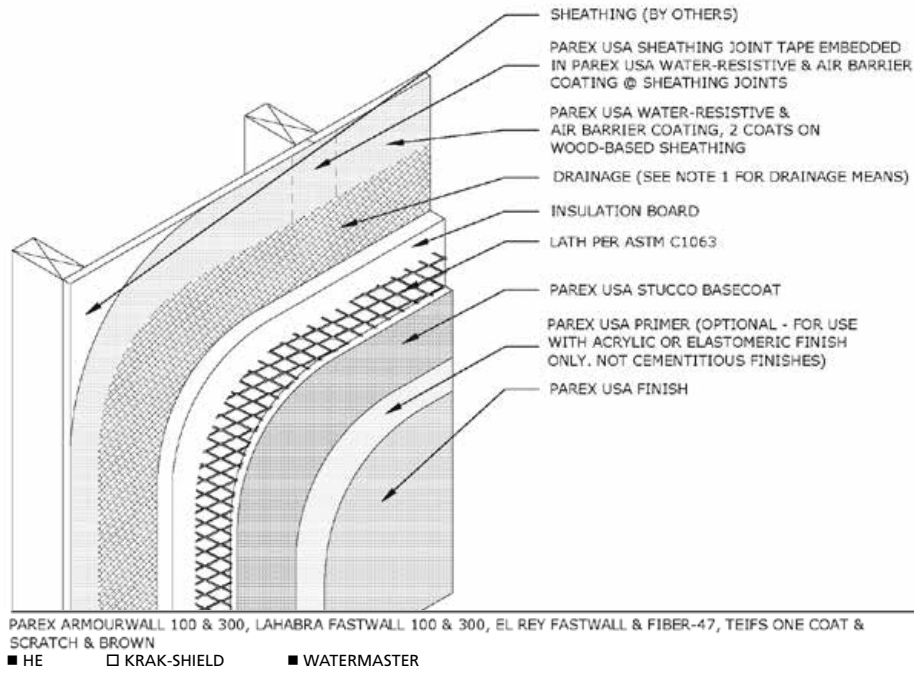
GENERAL CONSTRUCTION



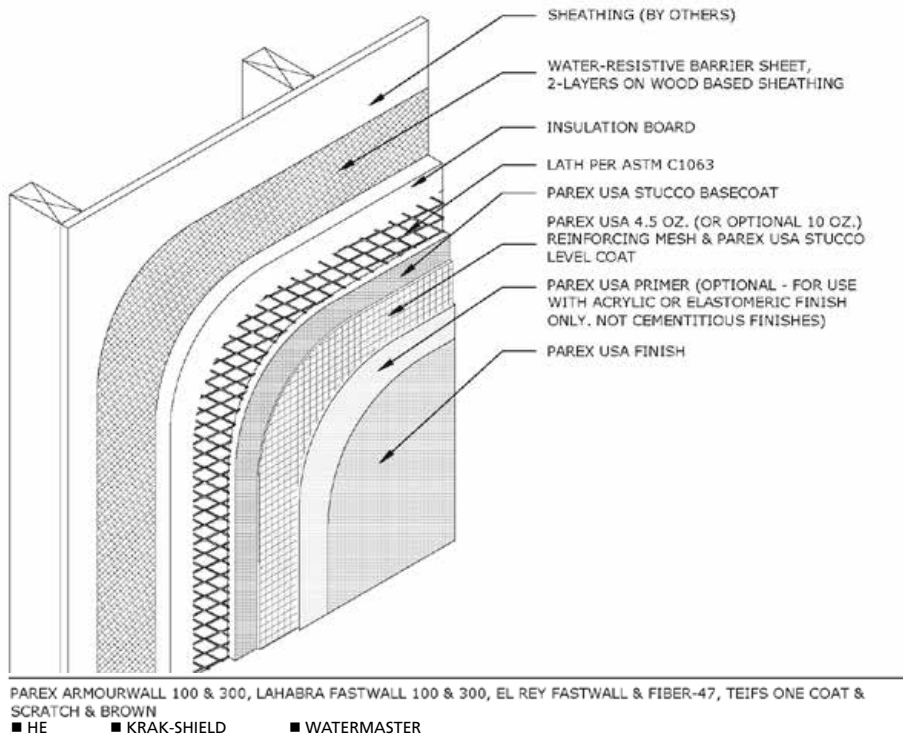
PAREX ARMOURWALL 100 & 300, LAHABRA FASTWALL 100 & 300, EL REY FASTWALL & FIBER-47, TEIFS ONE COAT & SCRATCH & BROWN
 ■ HE □ KRAK-SHIELD ■ WATERMASTER

G1.01 HE-STUCCO ASSEMBLY-WOOD FRAME

Please refer to the note on the front cover before reviewing these details.

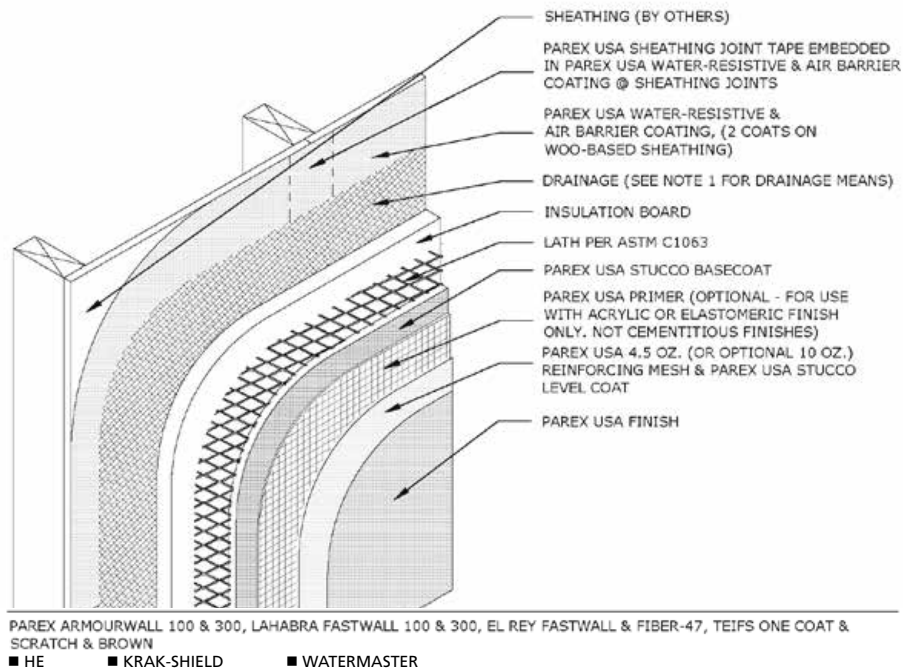


G1.02 HE-STUCCO ASSEMBLY-WATERMASTER-WOOD FRAME

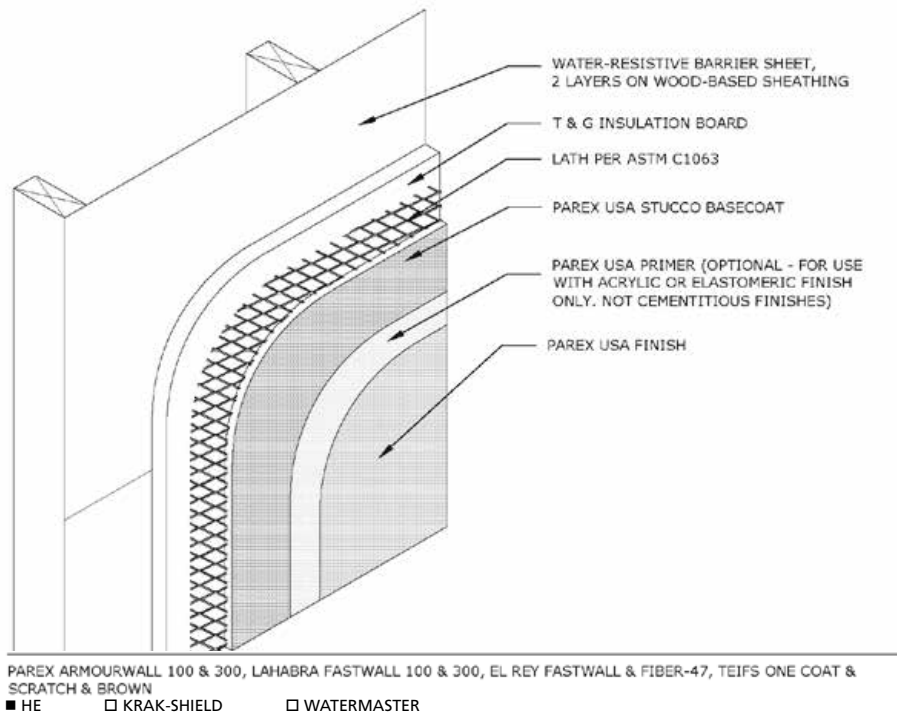


G1.03 HE-STUCCO ASSEMBLY-KRAK-SHIELD-WOOD FRAME

GENERAL CONSTRUCTION

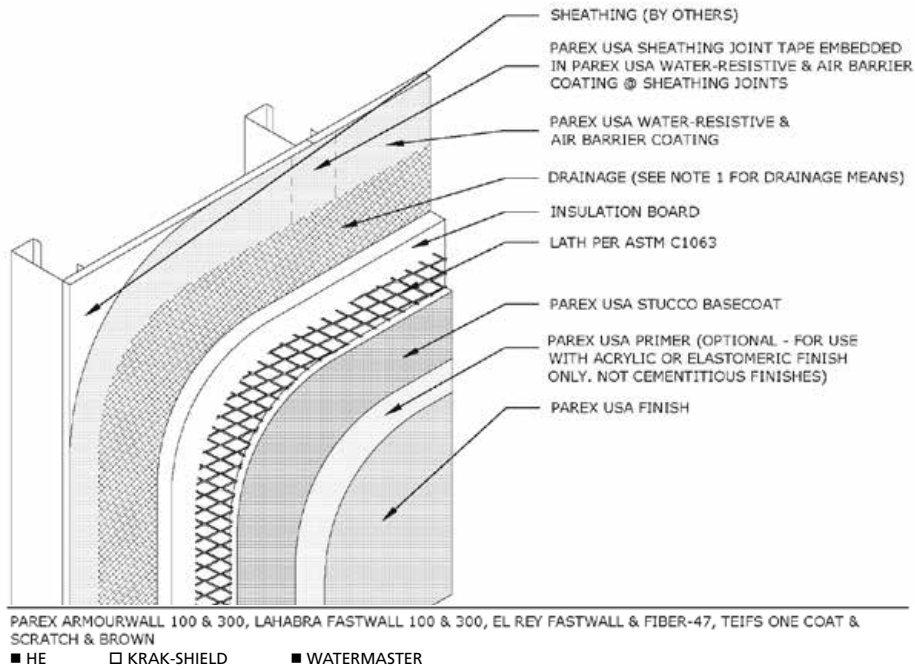


G1.04 HE-STUCCO ASSEMBLY-WATERMASTER-KRAK-SHIELD-WOOD FRAME

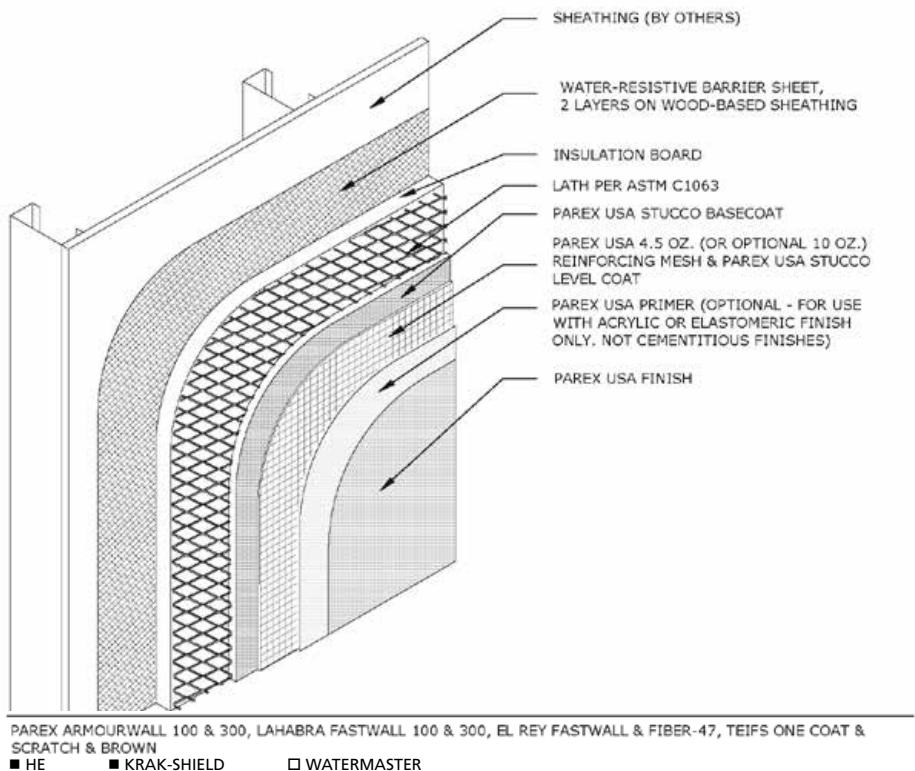


G1.05 HE-STUCCO ASSEMBLY-OPEN FRAME-WOOD FRAME

Please refer to the note on the front cover before reviewing these details.

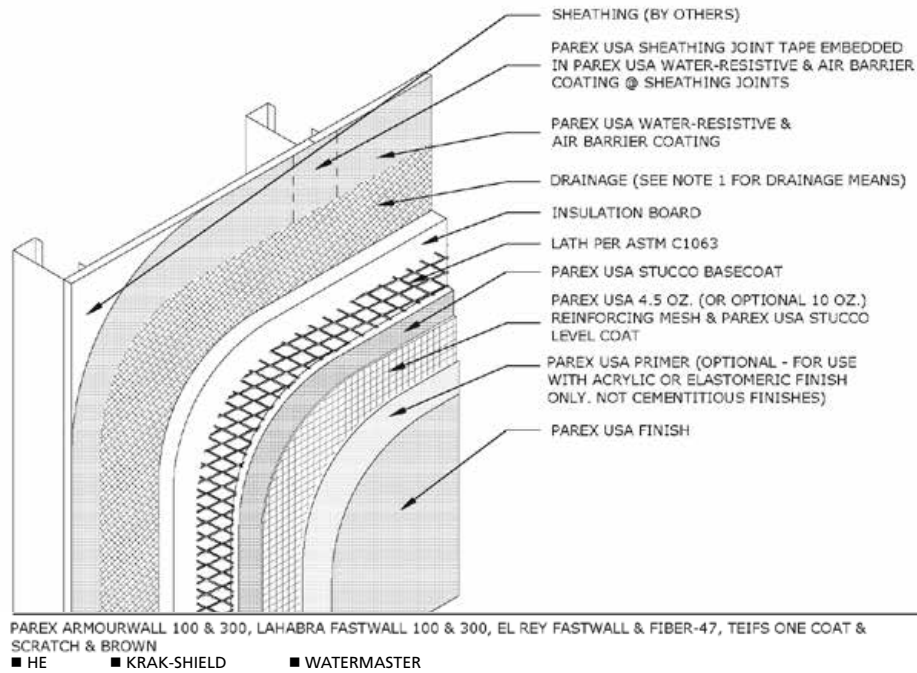


G1.06 HE-STUCCO ASSEMBLY-WATERMASTER-STEEL FRAME

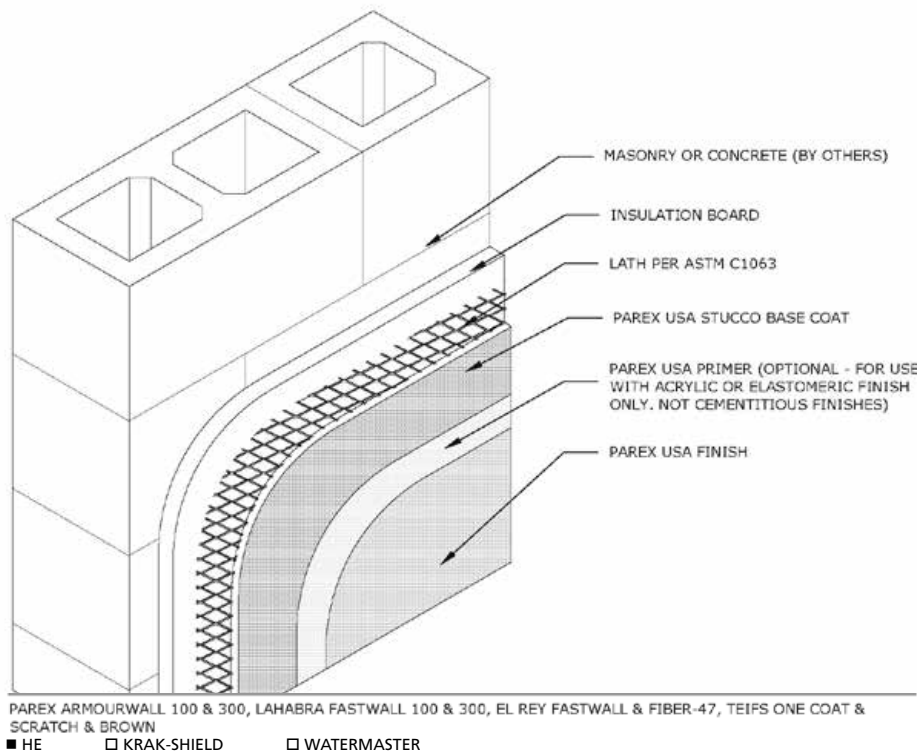


G1.07 HE-STUCCO ASSEMBLY-KRAK-SHIELD-STEEL FRAME

GENERAL CONSTRUCTION



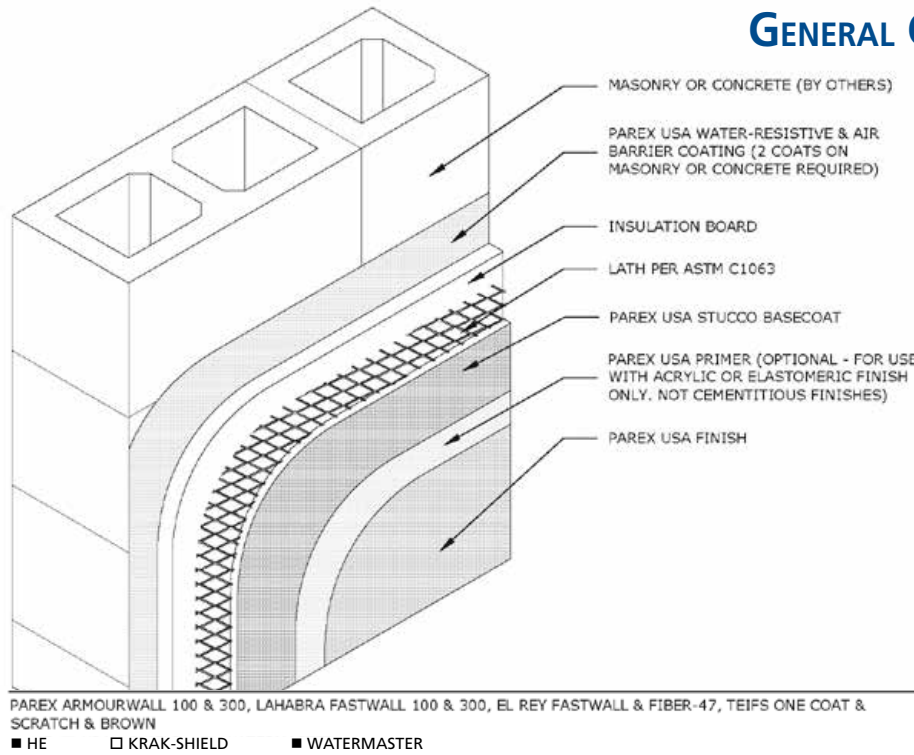
G1.08 HE-STUCCO ASSEMBLY-WATERMASTER-KRAK-SHIELD-STEEL FRAME



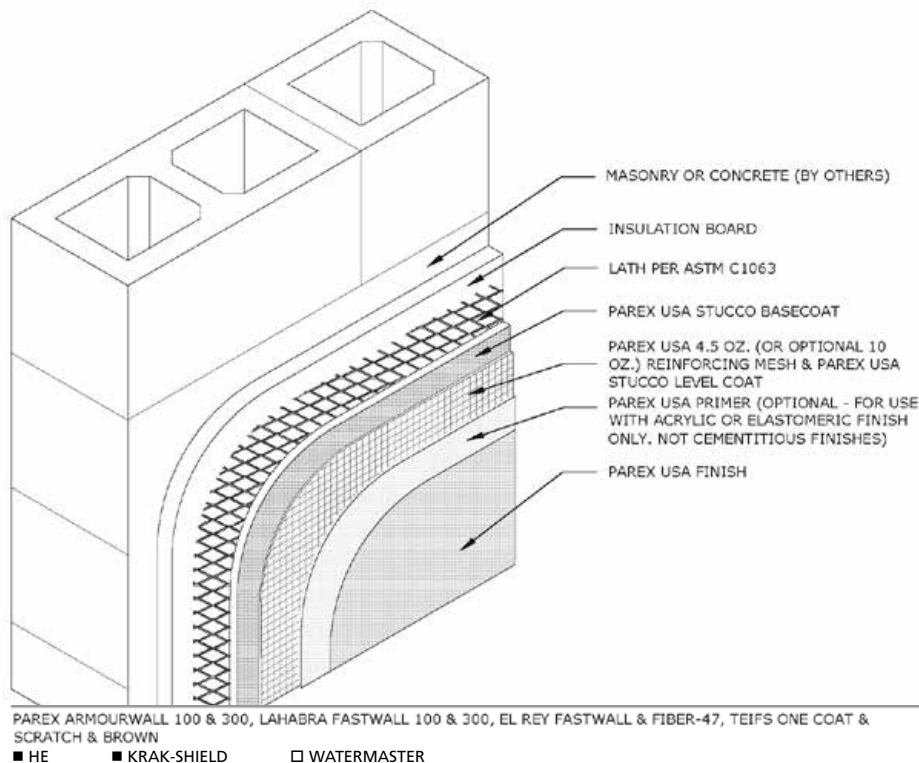
G1.09 HE-STUCCO ASSEMBLY-CMU

Please refer to the note on the front cover before reviewing these details.

GENERAL CONSTRUCTION

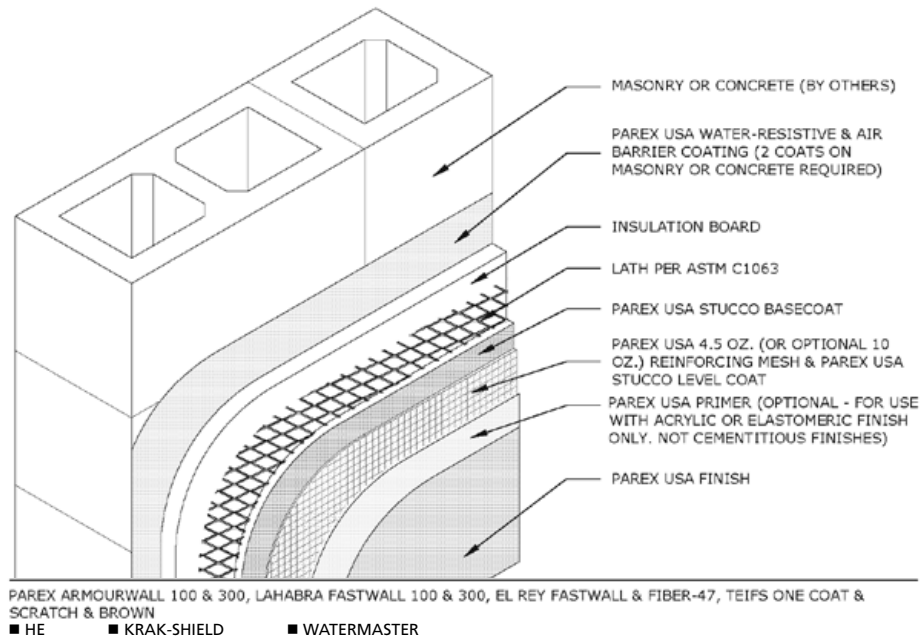


G1.10 HE-STUCCO ASSEMBLY-WATERMASTER-CMU

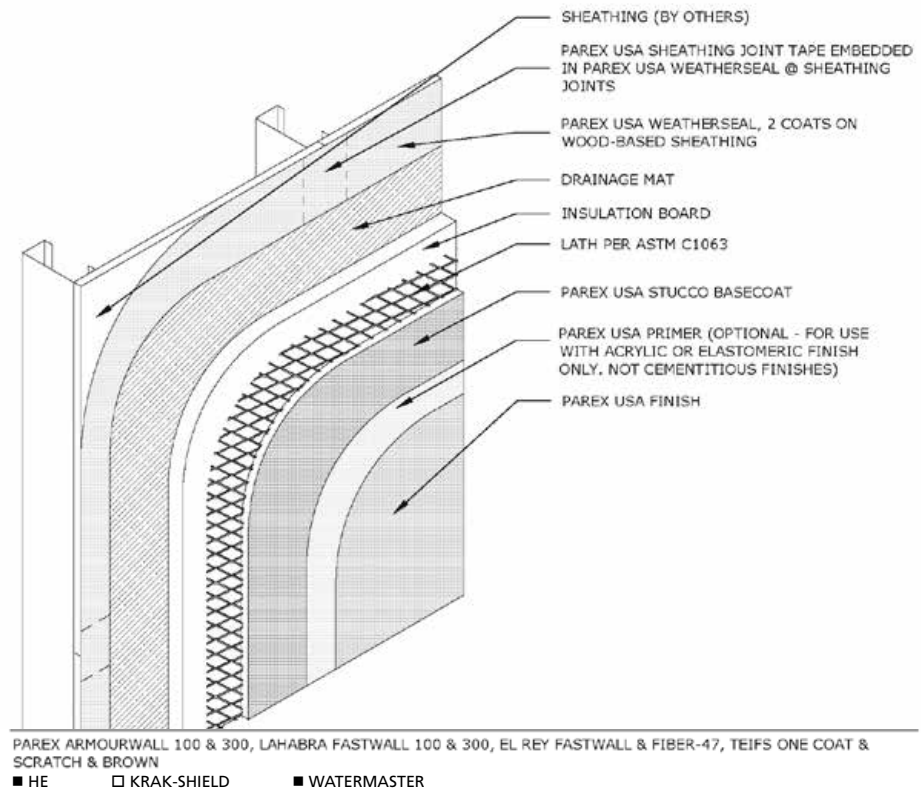


G1.11 HE-STUCCO ASSEMBLY-KRAK-SHIELD-CMU

GENERAL CONSTRUCTION

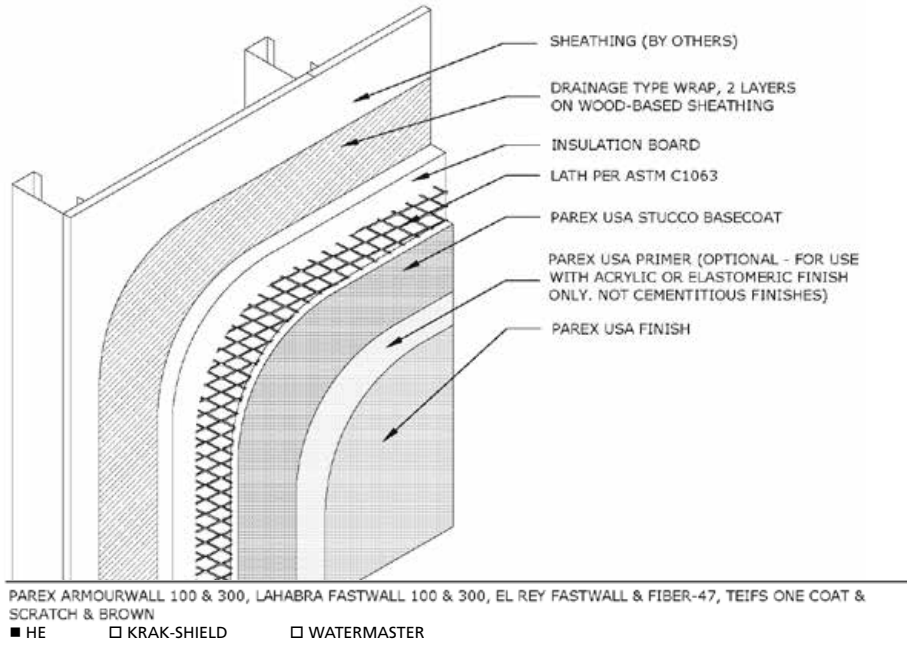


G1.12 HE-STUCCO ASSEMBLY-WATERMASTER-KRAK-SHIELD-CMU

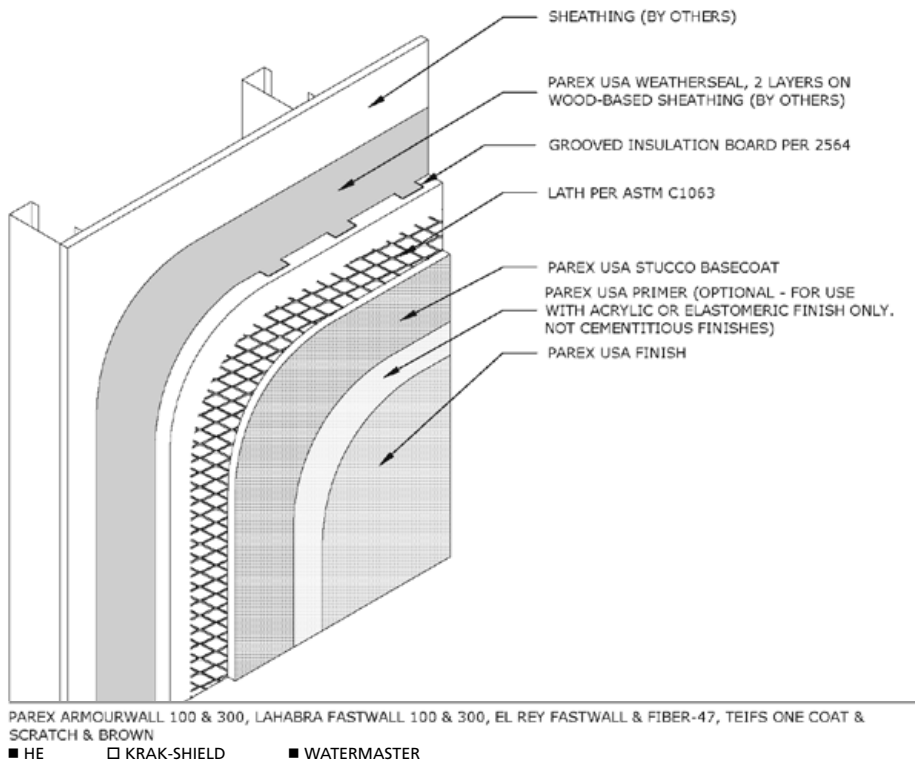


G1.13 HE-STUCCO ASSEMBLY-DRAINAGE MAT-STEEL FRAME

Please refer to the note on the front cover before reviewing these details.

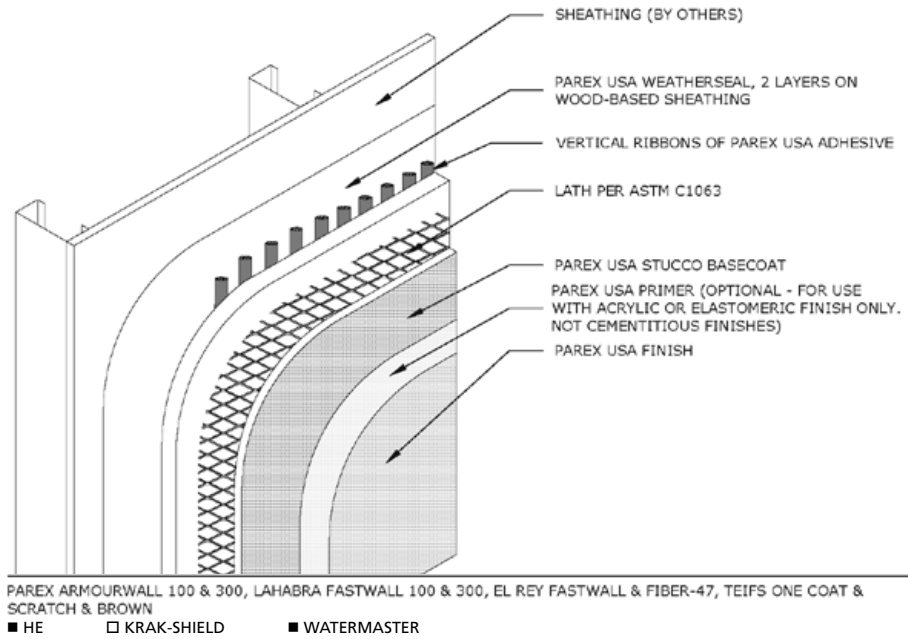


G1.14 HE-STUCCO ASSEMBLY-DRAINAGE TYPE WRAP-STEEL FRAME

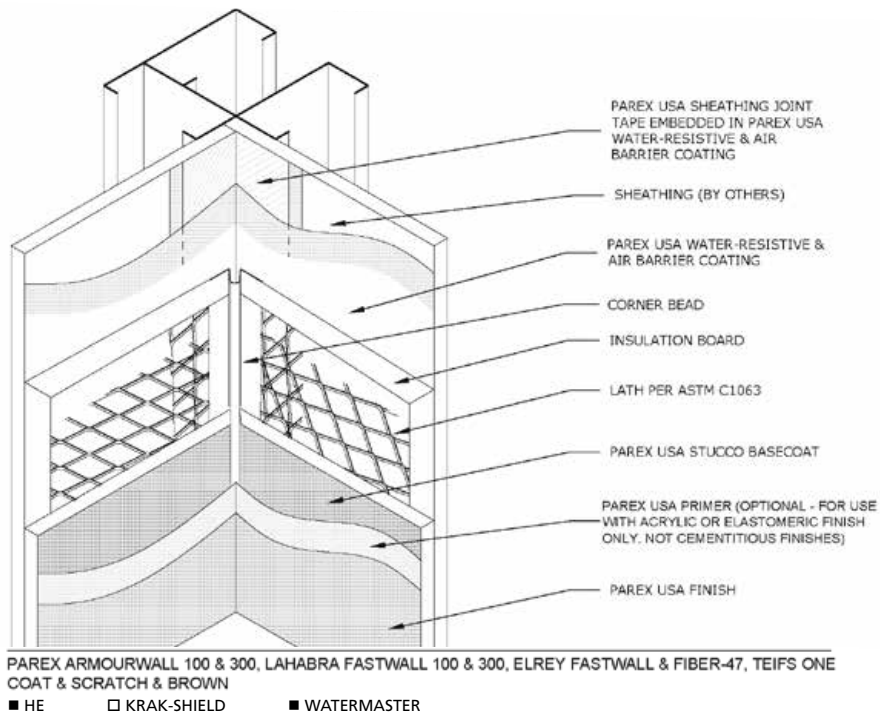


G1.15 HE-STUCCO ASSEMBLY- GROOVED BOARD -STEEL FRAME

GENERAL CONSTRUCTION

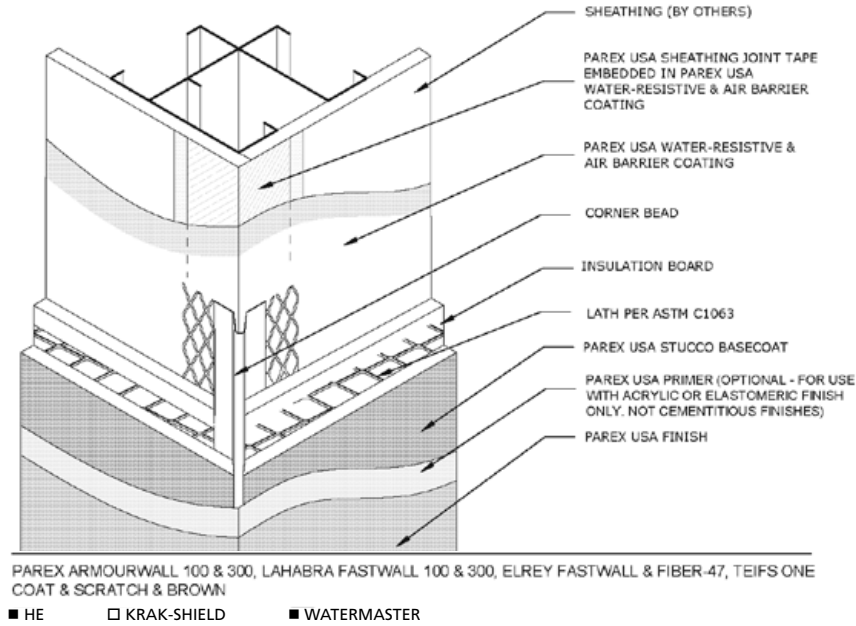


G1.16 HE-STUCCO ASSEMBLY-VERTICAL RIBBONS STEEL FRAME



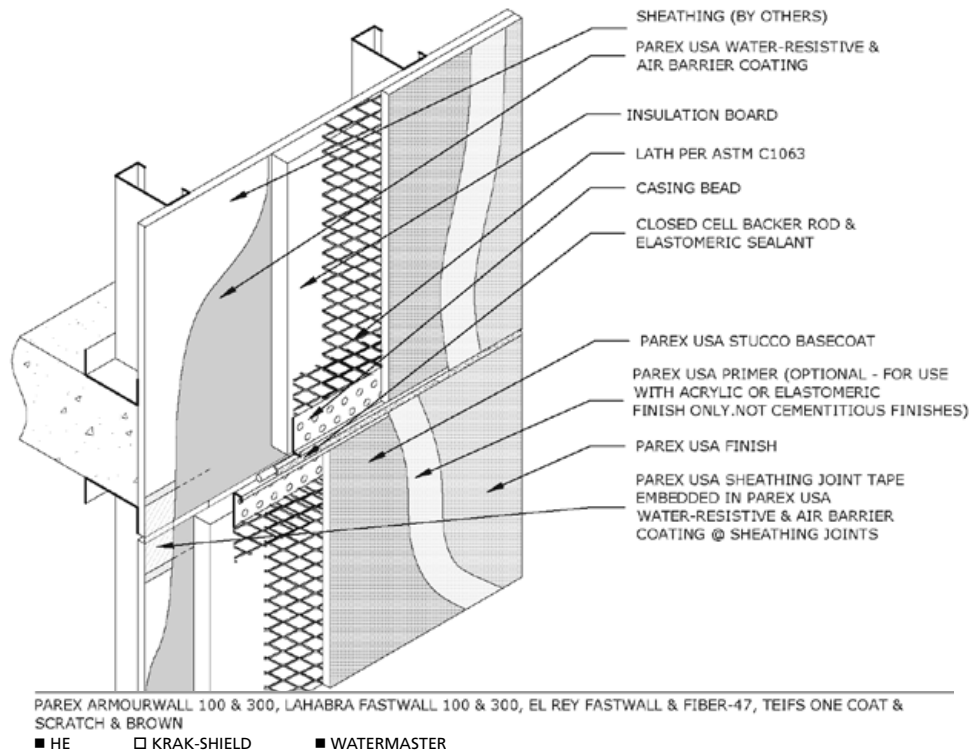
G1.17 HE-INSIDE CORNER

Please refer to the note on the front cover before reviewing these details.



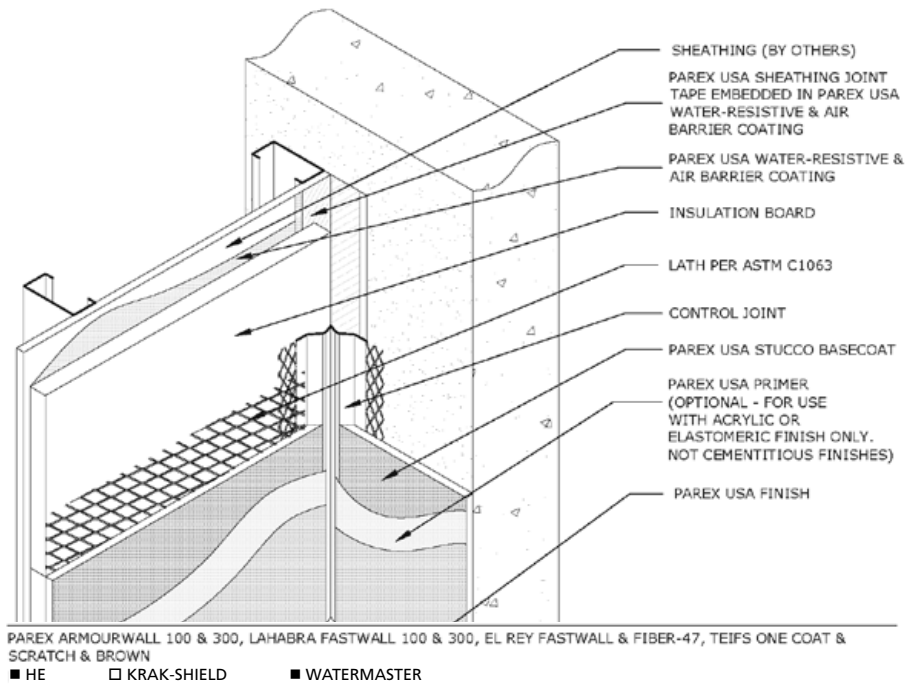
G1.18 HE-OUTSIDE CORNER

EXPANSION JOINTS

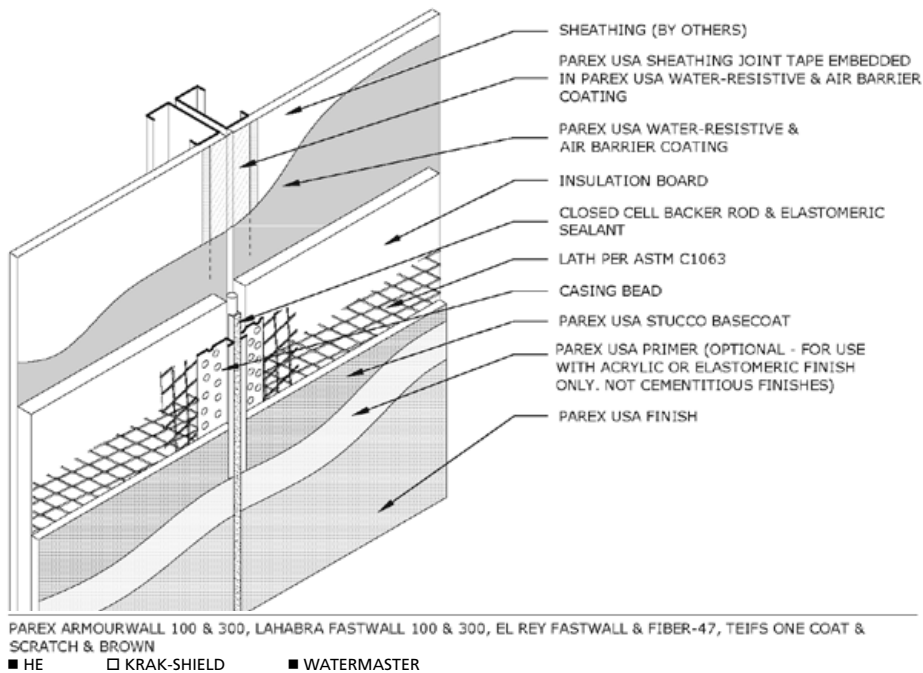


E1.01 HE-EXPANSION JOINT

EXPANSION JOINTS

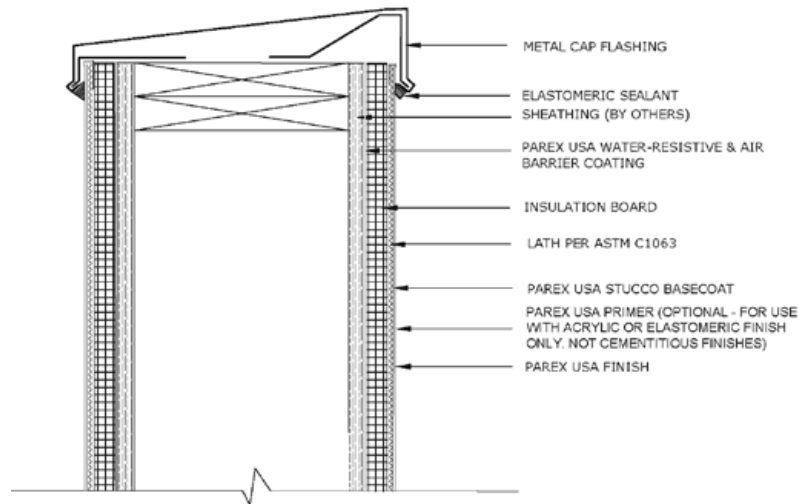


E1.02 HE-DISSIMILAR SUBSTRATE



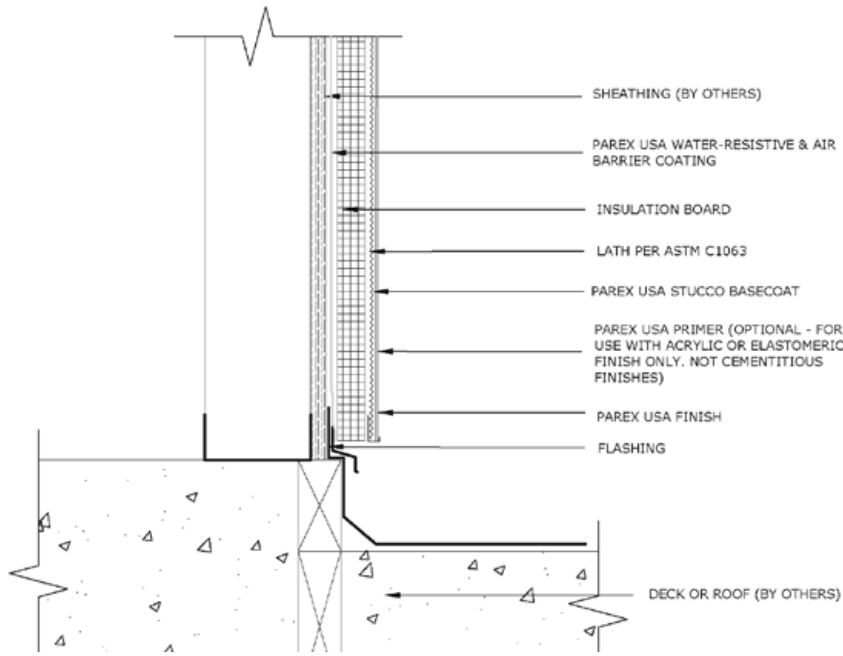
E1.03 HE-CASING BEAD TERMINATION

Please refer to the note on the front cover before reviewing these details.



PAREX ARMOURWALL 100 & 300, LAHABRA FASTWALL 100 & 300, ELREY FASTWALL & FIBER-47, TEIFS ONE COAT & SCRATCH & BROWN
 ■ HE □ KRAK-SHIELD ■ WATERMASTER

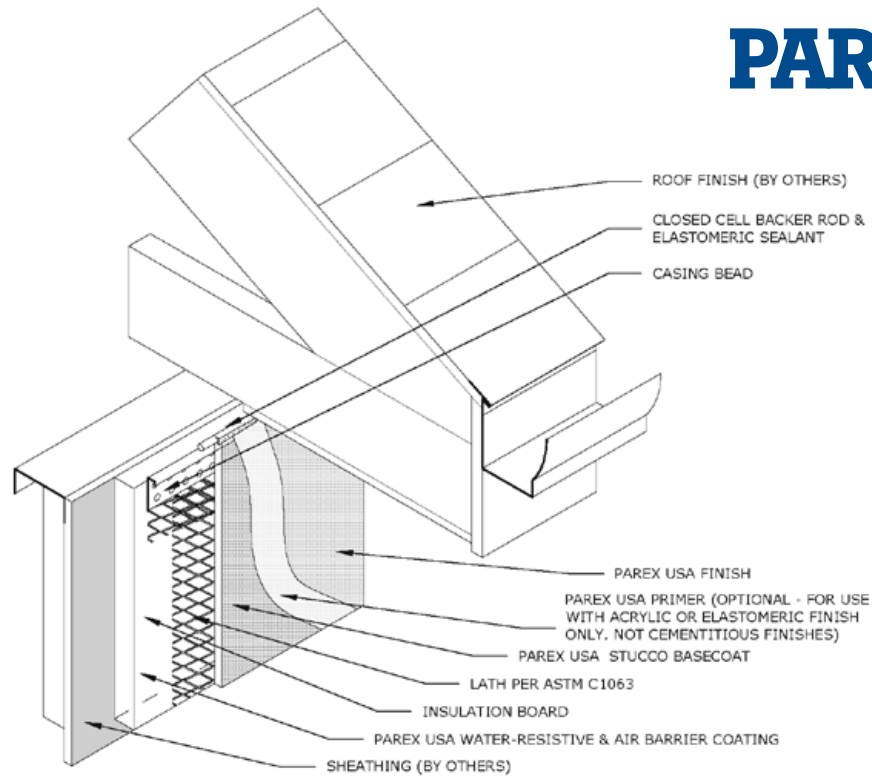
R1.01 HE-DOUBLE FACED PARAPET-WOOD FRAME



PAREX ARMOURWALL 100 & 300, LAHABRA FASTWALL 100 & 300, ELREY FASTWALL & FIBER-47, TEIFS ONE COAT & SCRATCH & BROWN
 ■ HE □ KRAK-SHIELD ■ WATERMASTER

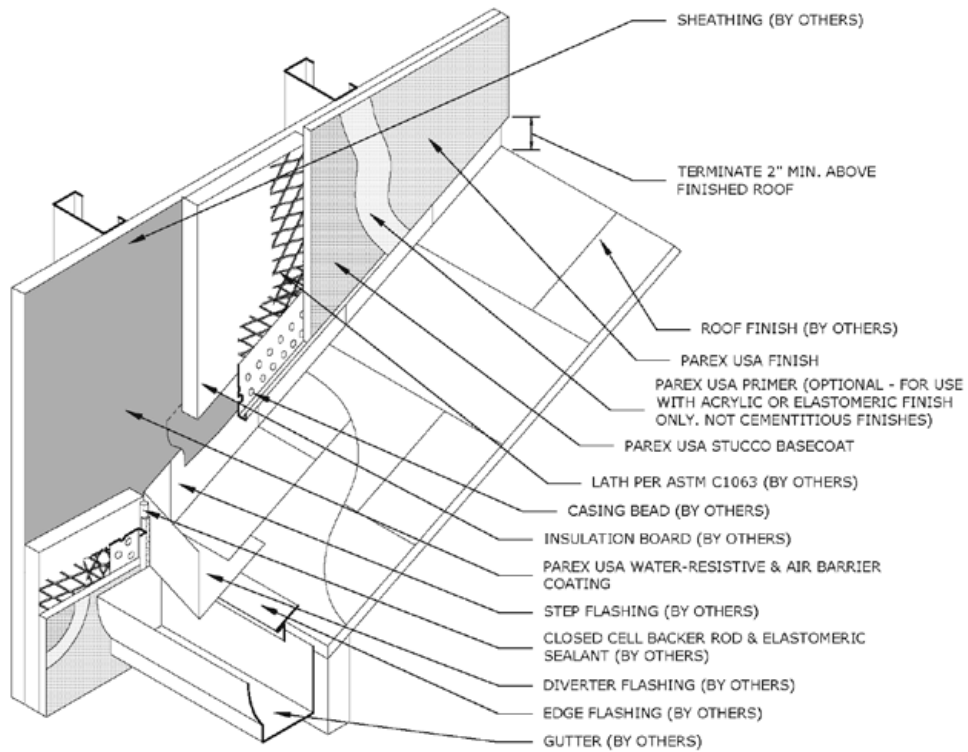
R1.02 HE-TERMINATION AT DECK GABLE FLASHING

ROOF LINE



PAREX ARMOURWALL 100 & 300, LAHABRA FASTWALL 100 & 300, EL REY FASTWALL & FIBER-47, TEIFS ONE COAT & SCRATCH & BROWN
 ■ HE □ KRAK-SHIELD ■ WATERMASTER

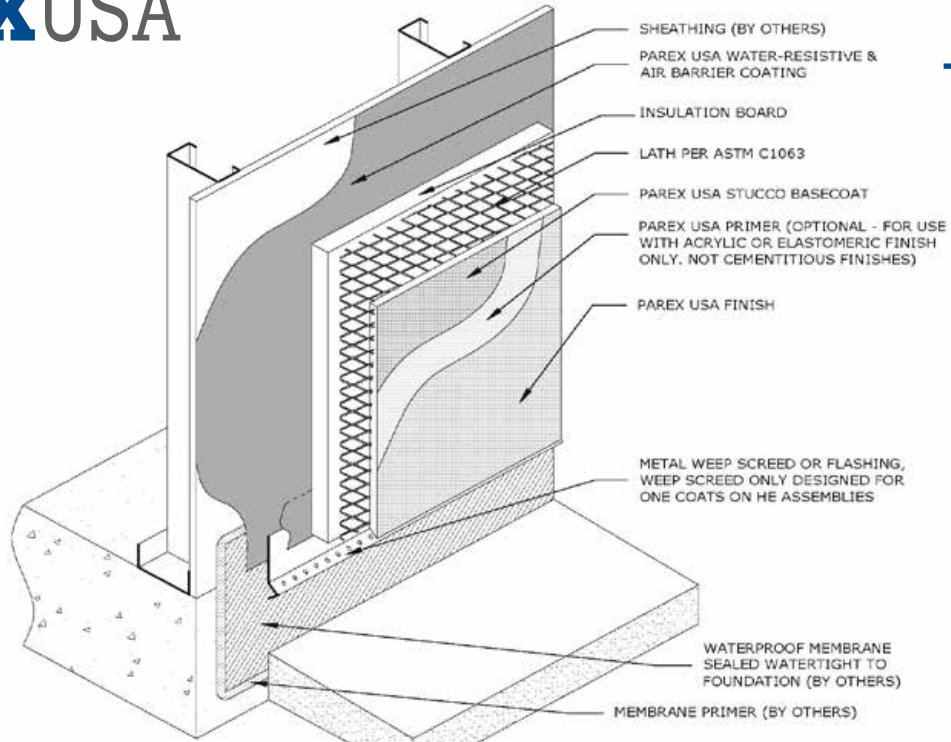
R1.03 HE-TERMINATION AT SOFFIT



PAREX ARMOURWALL 100 & 300, LAHABRA FASTWALL 100 & 300, EL REY FASTWALL & FIBER-47, TEIFS ONE COAT & SCRATCH & BROWN
 ■ HE □ KRAK-SHIELD ■ WATERMASTER

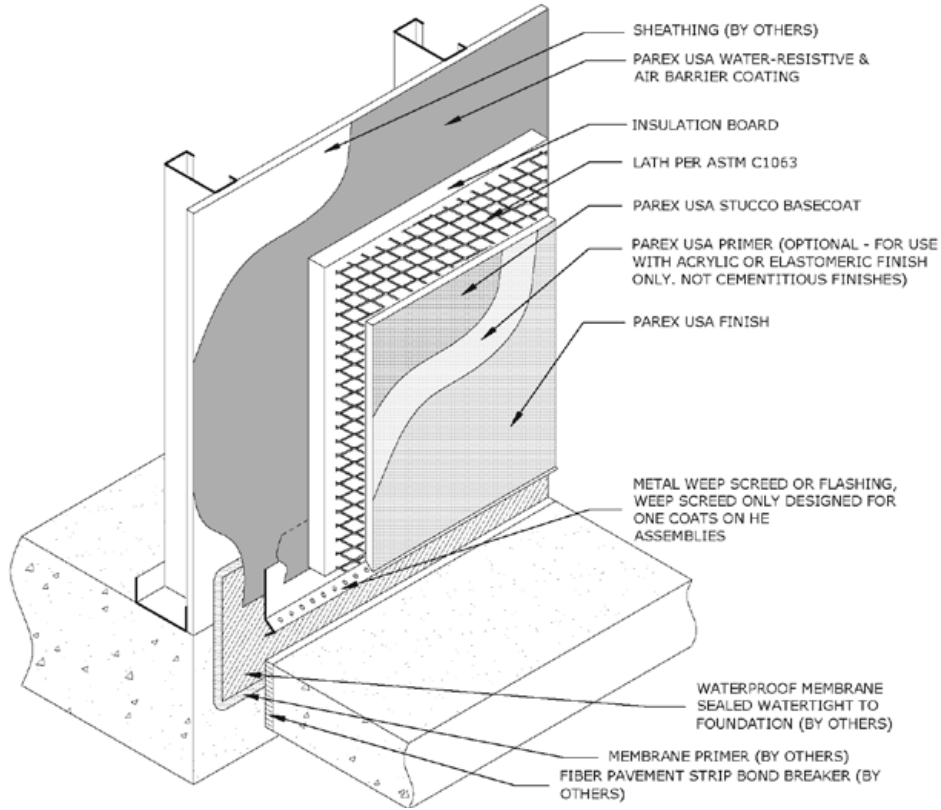
R1.04 HE-TERMINATION AT WALL DIVERTER

Please refer to the note on the front cover before reviewing these details.



PAREX ARMOURWALL 100 & 300, LAHABRA FASTWALL 100 & 300, EL REY FASTWALL & FIBER-47, TEIFS ONE COAT & SCRATCH & BROWN
 ■ HE □ KRAK-SHIELD ■ WATERMASTER

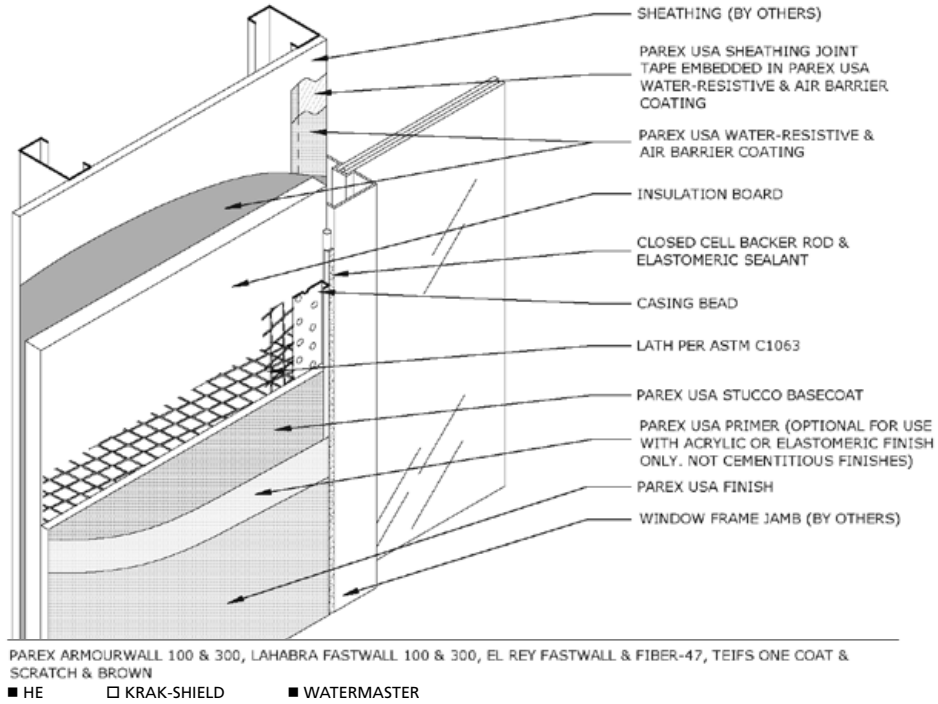
T1.01 HE-TERMINATION AT GRADE



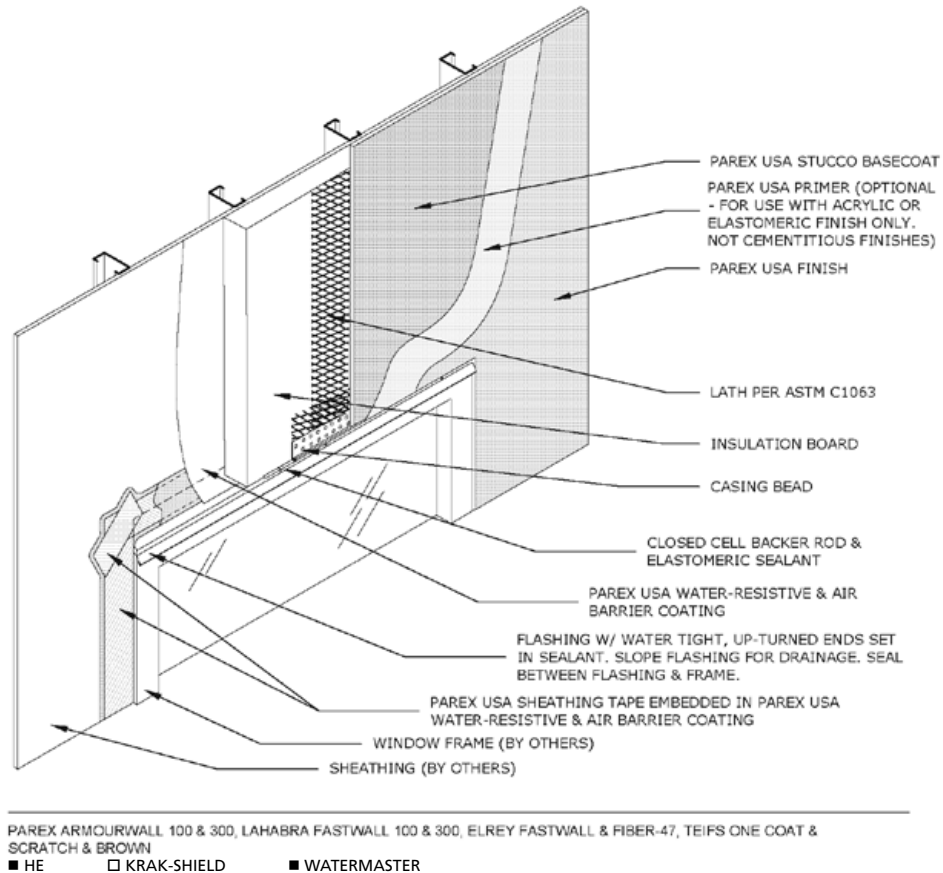
PAREX ARMOURWALL 100 & 300, LAHABRA FASTWALL 100 & 300, EL REY FASTWALL & FIBER-47, TEIFS ONE COAT & SCRATCH & BROWN
 ■ HE □ KRAK-SHIELD ■ WATERMASTER

T1.02 HE-TERMINATION AT PAVEMENT

WINDOWS



W1.01 HE-TERMINATION AT WINDOW JAMB

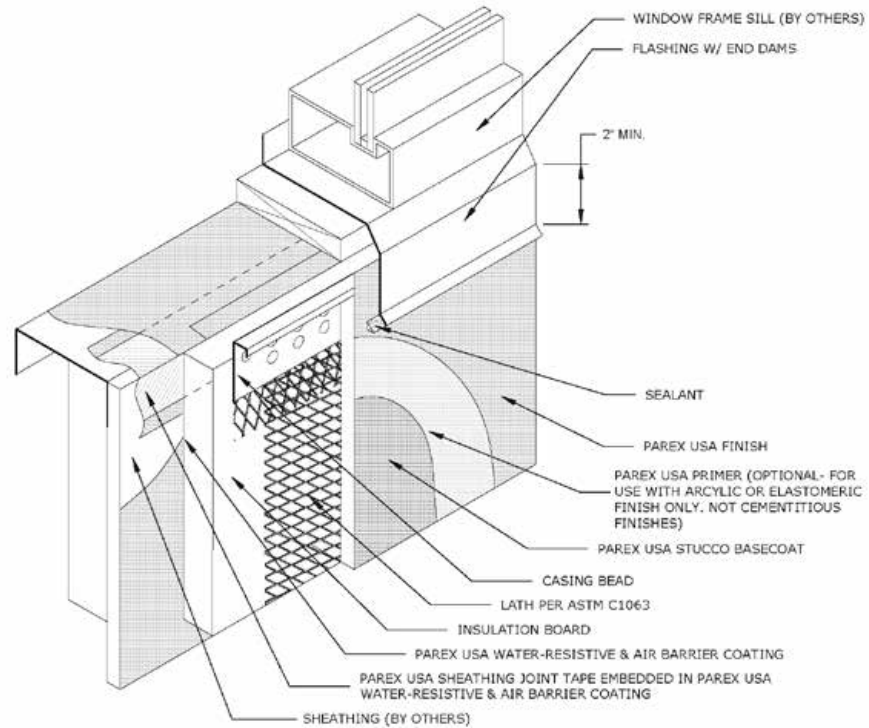


W1.02 HE-TERMINATION AT WINDOW HEAD

Please refer to the note on the front cover before reviewing these details.

Parex USA Stucco Details CSI SECTION 09 22 00

WINDOWS



PAREX ARMOURWALL 100 & 300, LAHABRA FASTWALL 100 & 300, ELREY FASTWALL & FIBER-47, TEIFS ONE COAT & SCRATCH & BROWN
 ■ HE □ KRAK-SHIELD ■ WATERMASTER

W1.03 HE-TERMINATION AT WINDOW SILL

Corporate Office

Parex USA, Inc.
4125 E. La Palma Ave., Suite 250
Anaheim, CA 92807
(866) 516-0061
Tech Support: (800) 226-2424

Facilities

French Camp, CA
North Hollywood, CA
Riverside, CA
Colorado Springs, CO
Haines City, FL

Duluth, GA
Redan, GA
Albuquerque, NM
Allentown, PA
San Antonio, TX

